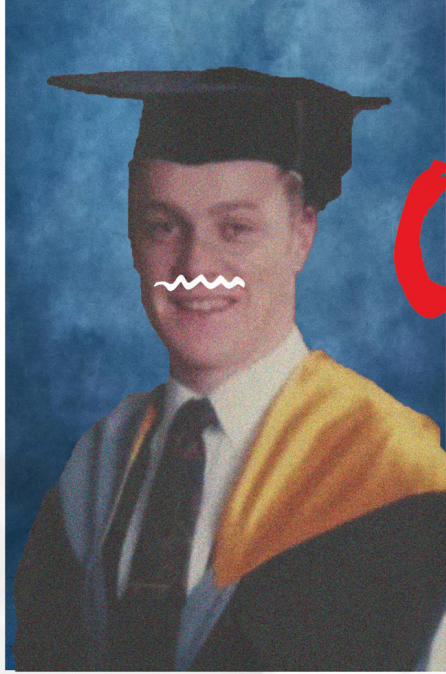
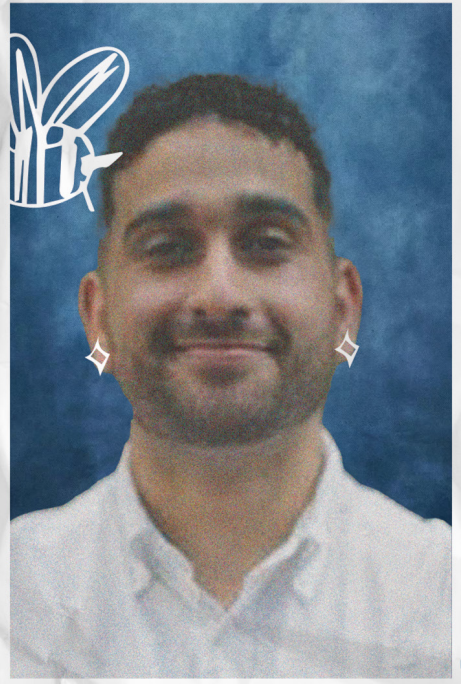
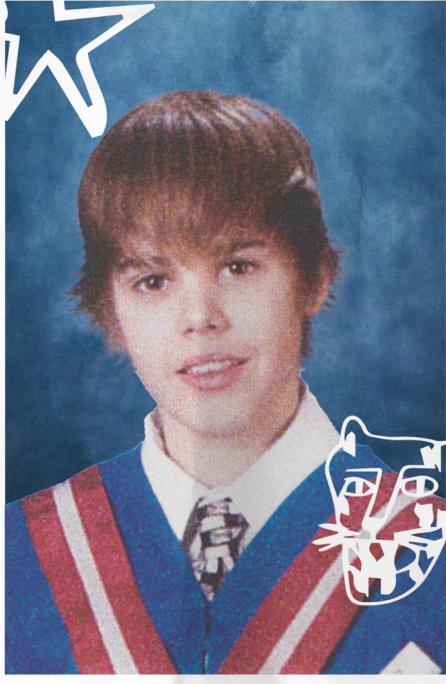


The background of the cover is a vibrant, abstract watercolor painting. It features a central circular motif in shades of green and blue, surrounded by splatters and washes of yellow, brown, purple, and teal. The overall texture is organic and painterly.

UBUNTU

UBUNTU MAGAZINE 2024

LIVE MUSIC-DJS-FREE CANDY FLOSS AND ICED COFFEE- PHOTO BOOTH-GIVEAWAYS-INFLATABLE GAMES



AUSA PRESENTS
CLASS OF
2024
😊



17 OCTOBER - GRAFTON CAMPUS QUAD - 18 OCTOBER - JOHN HOOD PLAZA + MAIN LIBRARY - 10AM-2PM

CONTENTS

EDITORIAL 4

NEWS 6

THE GROWTH OF THE PACIFIC PEOPLE AT UNI 8

ARAB AND ISRAELI CULTURAL INFLUENCE 10

DAVID'S TREATY PRINCIPLE BILL ?!?! 17

POETRY 18

**CHRISTIANITY VS RAINBOW COMMUNITY
WITHIN A PACIFIC UMBRELLA 20**

HIBISCUS & RUTHLESS 22

PUZZLES 24

HOROSCOPES 26

STAFF

EDITOR KIERAN PANUI (HE/HIM)
editor@craccum.co.nz

ASSISTANT EDITOR KALA BURGESS (SHE/HER)
subeditor@craccum.co.nz

FEATURES EDITOR OLIVER COCKER (HE/HIM)
features@craccum.co.nz

ARTS EDITOR LEWIS CREED (HE/HIM)
arts@craccum.co.nz

LIFESTYLE EDITOR KAAVYA GHOSHAL (SHE/HER)
lifestyle@craccum.co.nz

NEWS EDITOR ALAN WU (HE/HIM)
news@craccum.co.nz

VISUAL ARTS ARIANNA RAMOS (SHE/HER)
visualarts@craccum.co.nz

ASSISTANT VISUAL ARTS BEN LUO (HE/HIM)
visualarts@craccum.co.nz

SOCIAL MEDIA LEE LI (SHE/HER)
socials@craccum.co.nz

PASIFIKA EDITOR IATUA FELAGAI TAITO (HE/HIM)
pasifika@craccum.co.nz

MĀORI EDITOR BLAZE WEBSTER (SHE/HER)
maori@craccum.co.nz

ENVIRONMENTAL EDITOR MIKE CROSS (HE/HIM)
environmental@craccum.co.nz

DESIGNER NICK WITHERS (HE/THEY)
design@ausa.org.nz

ADVERTISING
advertising@ausa.org.nz

HOROSCOPES CLARICE DE TOLEDO (SHE/HER)

**INTERNS TIM EVANS (THEY/THEM) (ARTS),
TREVOR PRONOSO (HE/HIM) (NEWS),
REEMA ARSILAN (SHE/HER) (FEATURES).**

EDITORIAL OFFICE

TOP LEVEL

STUDENT UNION
BUILDING

34 PRINCES STREET

f CraccumMagazine

@craccum

@craccum

@craccummag



**WANT TO CONTRIBUTE?
WE WOULD LOVE TO HEAR FROM
YOU! JUST SEND US AN EMAIL!**



I am Yueyang Chen, an international student at the University of Auckland.

I am originally from China. I completed my bachelor's degree in China and then got a chance to study in Norway and Switzerland from 2014 to 2017. I worked in Beijing for several years before I came to New Zealand in 2022. I am currently doing research as a PhD candidate in the water-related field at the Faculty of Engineering.

As an international student, the decision to study at the University of Auckland was more than just an academic pursuit. It was a leap into the unknown, a new chapter far from the familiar landscapes of home. I arrived in New Zealand with a mixture of excitement and uncertainty. After studying in diverse environments in Norway and Switzerland, I was no stranger to adapting to new cultures. Yet, New Zealand felt different, both daunting and inviting.

The first few weeks on campus were a whirlwind. The University of Auckland, with its open spaces and modern facilities, was a far cry from the bustling streets of Beijing, where I had worked for several years before beginning this new journey. The university's commitment to diversity soon made me feel more at home. I realized I was not alone in my experience; there were many international students from every corner of the world, all on similar journeys.

Finding a sense of belonging took time. I found solace in the international student community, where we shared stories of homesickness, culture shock, and excitement over new friendships and discoveries. One of the biggest surprises was the warm, laid-back nature of Kiwi culture. People here were quick to smile, eager to help, and genuinely interested in learning about my background. I felt respected, valued, and, most importantly, welcomed.

What truly made Auckland special, though, was the balance between study and life. Here, nature is never far away. The beautiful harbors, lush parks, and easy access to beaches offer a constant reminder to take a step back, breathe, and enjoy the world outside of academic pressures.

Culturally, New Zealand is distinct yet somehow familiar. In a way, it feels like a meeting place for cultures worldwide, yet it retains its unique identity. Whether it is learning about Māori culture or engaging in conversations with locals, I have found this country to be rich in history, kindness, and understanding. Learning about the indigenous culture here and comparing it to the various cultures I have encountered throughout my studies and travels has been fascinating.

In 2024, I was honored to be elected as the International Students' Officer for the Auckland University Students' Association (AUSA). This role gives me the opportunity to advocate for the international student community, ensuring their voices are heard and their needs are addressed. I aim to help every international student feel that the University of Auckland is not just an institution but a place where they truly belong, a home away from home.

My time here has not just been about academic achievements but about personal development, cultural exchange, and building lifelong connections. To all international students who come here wondering if they will fit in, if they will find a place to call their own—I can confidently say, you will. It may take time, but New Zealand has a way of welcoming you with open arms, and the University of Auckland offers you a home to thrive in.



WED 16 OCT
5 – 7.30pm

HOLY TRINITY
CATHEDRAL

LIVE
MUSIC

The Burtones

Variety
of food
& drinks



The above event will proceed if there is light rain as there is undercover seating.
However if the event is cancelled due to severe weather, the rain date is Thursday 24 October, 5–7.30pm.
For more info go to Parnell.net.nz/parnell-food-truck-nites/

This event is sponsored by the
Parnell Business Association



Supercharge your savings!

It's time to upgrade your financial health.



Scan the QR code to register
for a free financial health
check-up with a MAS Adviser,
and be in to win \$3,000.



Visit mas.co.nz/grad24 to register
Terms and conditions apply*

mas



Be in to win \$3,000

TEU STRIKE LAST THURSDAY

Last week, staff at the University of Auckland participated in a strike action on Thursday, 26 September. They were one of four other universities nationwide, including Massey University, the University of Canterbury, and Lincoln University. The strike lasted from roughly 1:30 to 5 pm. This strike was in response to pay rise offers ranging from two to three per cent, disproportionate in light of the growing cost of living.

The Tertiary Education Union is advocating for higher wages on behalf of New Zealand's university sector. The union seeks a six per cent pay increase for the 4,000 members it is representing, significantly greater than the universities have offered thus far.

Assistant National Secretary – Industrial, Daniel Benson-Guiu, says the strikes should come as no surprise to employers.

“Pay growth in the universities has been much slower than the rest of the Aotearoa workforce, at a time when inflation has been at 30-year highs. Our members will not take that lying down.”

Involving and engaging with ongoing university politics helps us to gather a better understanding of the situation. It is not just our own academic achievement that will be affected by the lack of consensus from the ongoing pay negotiations.

Organiser Nicole Wallace shared that one of the reasons the University of Auckland's leadership is not in agreement with Living Wage accreditation is that “roles earning less than that are mainly ‘jobs students do’”. Supporting our staff in the ongoing negotiations ensures that not only our professors and lecturers are given due support but also that the same is provided for our peers.

NEW HAKA WORLD RECORD SET IN EDEN PARK

A total of 6531 individuals, including celebrities such as Taika Waititi, attended Eden Park on the evening of Sunday, 29th September. Everyone came together for one reason, which was to set a new world record for the biggest haka performed. Initially, the organisers hoped for up to 10,000 participants.

This title has been held in France since 2014, where 4028 people participated. Although there were previous attempts that garnered crowds greater than 5,000 on New Zealand soil, these attempts failed as Guinness World Record Officials were not present to ratify them. More details can be found in the story below.



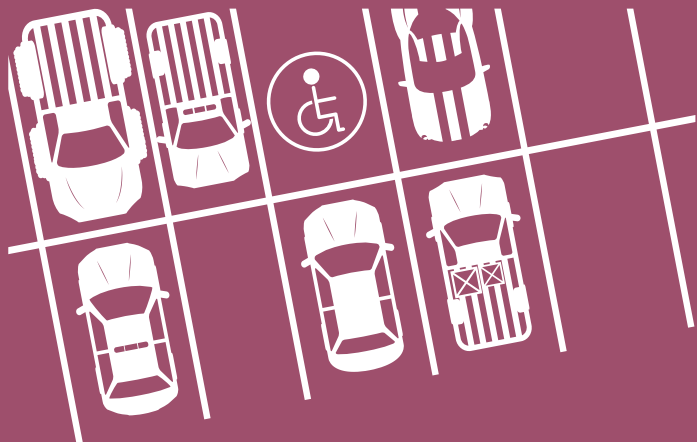
NEW GUINNESS WORLD
RECORD FOR LARGEST
HAKA

NEWS



ALAN WU





PARKING FINES INCREASED; MOBILITY PARK INFRINGEMENT NOW CARRIES PENALTY OF \$750

Students with a driver's license, beware!

From Tuesday 1 October, parking fines across the board have increased. Having been unchanged since 2004, they are now seeing movement. A parking fine of \$40 now costs \$70. The most staggering increase lies with infringements of mobility parking spaces. Originally at \$150, an infringement will now contain fees of \$750.

Auckland Mayor Wayne Brown suggests the government allow councils to set their own fines.

"Many Aucklanders, including people I know, do not regularly pay for parking because the fines are so low."

"As I have said several times, the idea that the maximum fine should still be the same in Auckland and Gore is pathetic."

Currently, fines are set by the government under the Land Transport Act, while local councils enforce these parking penalties. Although there were discussions for adjusting parking fines based on the fluctuations from changes to the consumer price index, it is unlikely to deter illegal parking. The call for giving councils rights to set their own fees are founded on the desire to ensure adequate fees are assigned.



DRIVERS PARKING
ILLEGALLY FACE STEEPER
FINES

GENDER PAY GAP REPORT 2024

Recently, the University released its report on the gender pay gap for women in different ethnic groups. The data aims to understand why gender pay gaps within the university exist, including gender distribution in various roles with different salaries and levels within certain roles. Asian academic staff were seen to have the largest pay gap of 33.5%, while Pacific women had the largest pay gap among professional staff at 13.1%.

Overall, gender pay gaps are largest for women of Pacific background and smallest for women belonging to Pākehā or European ethnic groups. The report found there was evidence for both gendered unequal pay in some areas, as well as an uneven distribution of genders across and within certain roles.

For this report, academic staff were categorised into three different categories: 'Traditional' (lecturers, professors), 'Teaching' (TAs, tutors) or 'Research' (research fellows). The report noted unequal pay in Professional positions for both men and women. Of interest was that women were found to be overrepresented in teaching roles, which generally have a lower median hourly rate.

Although the gender pay gap identifies various important findings, it is important to note some misconceptions. Implementing pay increases would solve the discrepancies, but it would not address the underlying factors that cause these gaps. Over time, the gap would reemerge. Additionally, the data compiled shares the overall pay gap across the institution, not just for a specific role. Tracking this data over time allows one to contemplate and prepare strategies to address this issue. More information can be found in the report below via the QR code.



UNIVERSITY OF AUCKLAND
GPG REPORT 2024





The growth of Pacific People at Universities in Aotearoa

PROGRESSION IS HAPPENING, IT'S TIME TO KEEP PUSHING THROUGH FOR THE BETTERMENT OF OUR COMMUNITIES



IATUA FELAGAI TAITO

Historically Universities weren't made for Indigenous people and communities and as time started to progress, and the diversity and melting pot of cultures came to align, Universities in a basic rough definition was a place for knowledge and to train academically and practically people to get jobs and to earn money and contribute to society as we know it.

So understanding that, in regard to Pacific students and staff there has been an increase around the progressional growth of Pacific influence within Universities. For instance, according to Te Pōkai Tara Universities New Zealand (<https://www.universitiesnz.ac.nz/sector-research-issues-facts-and-stats/building-māori-and-pacific-success/building-pacific-success>)

We have witnessed consistent improvements in Pacific engagement and accomplishment in our universities, increasingly at higher levels of qualification, backed up by evidence-based initiatives aimed at building competence, expanding our society's knowledge base, and achieving beneficial results. With the statistics showing verbatim:

"13,700 Pacific students (9% of domestic students). This is an increase of 27% from 2014. 22% of Pacific students studying at postgraduate level across the university sector (up from 19% in 2014). 10,300 Pacific equivalent full-time students (EFTS) in New

Zealand universities – an increase of almost 24% since 2014. Pacific bachelor's degree EFTS have increased by 23% in universities since 2014."

Specifically in the context of our own tertiary study here at Waipapa Taumata Rau | The University of Auckland there is a groundbreaking strategy to support Pacific staff and students here at Waipapa Taumata Rau. Where according to this UoA News article (<https://www.auckland.ac.nz/en/news/notices/2024/creating-our-pacific-strategy.html>) there is going to be a major informed work(s) around significantly "creating Waipapa Taumata Rau's first Pacific Strategy in 141 years" and that it is "led by Pro Vice-Chancellor Pacific Professor Jemaima Tiatia-Siau, a project team, steering committee and working group have been established".

This will bring together members from the university's faculties, service divisions, student associations, and the Office of the Pro Vice-Chancellor Māori. Which is incredibly important to as a result, to support a Pacific lens that is not tokenistic but impactful to the needs and aspirations of Pacific communities.

The growth of Pacific people in Waipapa Taumata Rau is rich and bright and I can see it continue to improve and enhance Pacific scholarship and people to be well equipped to contribute to our economy and families. There is immense support for Pacific students starting with

Tuākana programmes, Te Fale Pouāwhina, Leadership through Learning, Auckland University Pacific Islands' Association (AUPISA) and Pacific undergraduate and postgraduate scholarships. To find out some more information check out:- <https://www.auckland.ac.nz/en/students/student-support/personal-support/support-pacific-students.html>

Of-course there is the Pacific Studies programme at the Faculty of Arts under Te Wānanga o Waipapa which is the nucleus around Pacific views those that are contemporary and traditional, delves into Pacific storytelling through music and dance, unpacking Pacific history and indigenous knowledges and languages, explores the gender inequities and gender conversations around religion and cultures, analysing Polynesia, Micronesia and Melanesia, explains and touches upon Pacific mental health, education, politics and interdisciplinary ways of being. So many and more to explore with this incredible program.

It is an uplifting feeling knowing there is this growth happening within Universities for Pacific people and hopefully this inspires more Pacific people to stand up and use the services that are there so you can make the most of this tertiary education to hopefully give back to our communities and families.

ARAB AND ISRAELI CULTURE

HOW ARAB CULTURE INFLUENCES ISRAEL

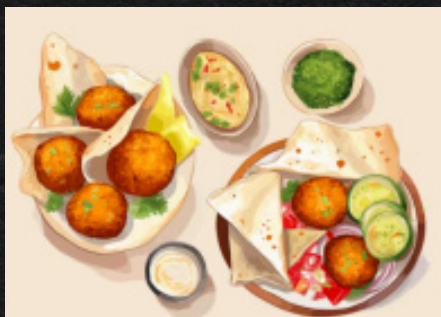
SHELLA DABBACH

Culture intertwines everything in life. Our communities, societies, and friendships are usually based on the solid platform of our culture. Whether it's the ethnic culture we grew up with at home or the religion we were raised in, it shapes who we are as people and the qualities we find important and dear at heart.

Being half-Israeli and Jewish, I'd like to shine a positive light on Jewish culture despite the hot topic of the conflict in the area. The olive tree land, the holy land, the promised land, Israel, Palestine, so many names for a slab of land located around the equator of the Earth. Yet it causes such immense problems and is home to one of the most disastrous humanitarian crises occurring in our century, the crisis in Gaza.

However, what's interesting about Israeli and Jewish culture is that it is so connected to Arabic culture. Many of the dishes and cuisine are found in both cultures, that is Arabic and Israeli. In Israel many Arabic people live in the country, around 2 million are citizens of Israel although identifying with their Arab/Palestinian nationality. You can find many of them setting up their authentic stalls in markets such as the famous Carmel Market and being friendly to all, regardless if they are Hebrew or Israeli people.

Famous middle-eastern dishes include: falafels, baba-ganoush, pita bread, and hummus. As shown in the images below:



Baba Ghanoush



Instead of spreading so much negativity it's so important in these times to learn more about each other and our varying backgrounds. When talking to people who aren't like you and who seemingly are so

different, it's powerful to find how emotions such as compassion, empathy, and understanding come into play.

This Ted Talk, personally, I feel like highlights both sides perspectives on the ongoing conflict and how both sides have been hurt and affected. It's important to focus on positive solutions rather than isolating or becoming completely polarised by certain movements we see in our present day.

[www.youtube.com › watch](https://www.youtube.com/watch?v=...)

A Palestinian and an Israeli, Face to Face | Aziz Abu Sarah ...



How can Israelis and Palestinians achieve peace? Palestinian peacemaker Aziz Abu Sarah and Israeli ... talking, compromising, and making peace.

YouTube · TED · 18 Apr 2024

People at Universities all over the world may have a lot to say. However, there are many students with families affected by the conflict and it's important to realise the trauma

and horrors of both people and cultures, both the Palestinian People and the Jewish people.

Many of the Jewish people settled in the land of Israel when it was formed in 1948 actually originate from Middle Eastern and Arabic countries like Egypt, Syria, and Iraq. It's not entirely a European colonisation country. In fact, many Jewish or Israeli people can speak both Arabic and Hebrew, such as my grandparents as they were Mizrahi Jews. Not only that, but Palestinians, the Palestinian flag is similar to the Jordan

flag, signifying the similar relationship between both Arab countries.

Culture is enforced on us by childhood beliefs and very importantly the influence of our parents and families on our entire understanding of our identities. We have been brought up to believe certain things that may not be entirely aligned with our moral thinking as we grow up. So before you start to follow the crowd or a trending movement, just take a step back and think for yourself.

Another significant site in Israel is Jerusalem. A holy home to the three major religions of the world today, Christianity, Islam, and Judaism.

Not only this, although lots of people keep mentioning Palestine, Hebrew and Arabic are both very ancient languages that have significance from centuries ago, and both Hebrew and Arabic people have lived in this area.

Anyways, let's all be grateful for the fact that we live in Aotearoa, another land given a significant nickname of the discovered land of 'milk and honey' that has a place for everyone no matter their nationality, ethnicity, or religious background.



1. Theia - BALDH3AD! [NZ]
2. MĀ - Pūhā me te Poroheua [NZ]
3. Revulva - Heroin Chic [NZ]
4. Snivelling Swineheards - Deathbubble Aneurysm [NZ]
5. Flea Miller - Wasting Time [NZ]
6. P.H.F - Doe [NZ]
7. Mokotron - ŌHĀKĪ [NZ]
8. Neive Strang - A Sweet Dive [NZ]
9. Juno Is - Another Deal [NZ]
10. Bleeding Star - Don't Want Your Sympathy [NZ]

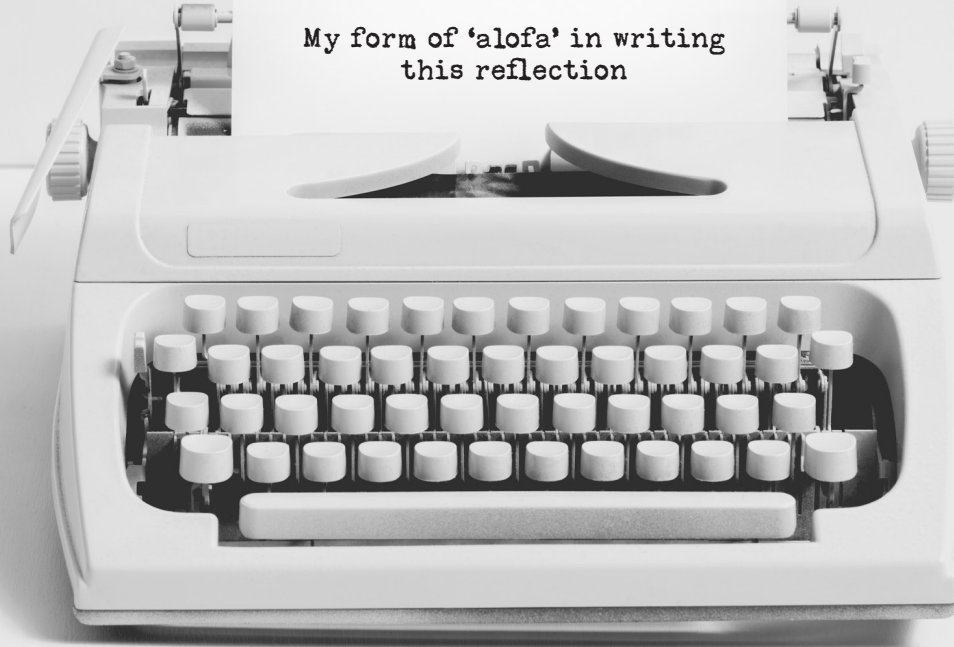


LISTEN
HERE TO THE
SPOTIFY
PLAYLIST



Personal reflections of being your inaugural Pasifika Editor

My form of 'alofa' in writing
this reflection



IATUA FELAGAI TAITO

You'd think that for Craccum being established and founded in 1927 that there would've been at least a Pasifika editor? Well 2024 we're here and we're here to make our noise present in a University that is the biggest in the country (over 40,000 students) and highest ranked too. It has been interesting as it is the end of the year and I ponder on this role.

And I realised that there is a huge weight that comes with this role, and I am not just trying to hype up this role as a form of elite privilege. But it really is a massive responsibility because Pacific people are not a monolith and we are extremely diverse and complex. For example, there are arguably 30,000 islands with their own distinctive cultures and ways of being that shows the diversity but also complexity too.

So, for me I try to maintain and write whatever comes to mind within the time perimeter (as we publish weekly) as I have a plethora of work I do as I am a student and fixed term staff here at Waipapa Taumata Rau so juggling it all is very hard.

I think of this role, and I think of Pacific leaders to me that have shaped me into hopefully having the courage to express our cultural ways of being and edge through this platform. I want to acknowledge Pro-Vice Chancellor Pacific Jemaima Tiatia-Siau, Albert Wendt, Epeli Hau'ofa, Seuta'afili Dr. Patrick Thomsen, Dr. Marcia Leenen-Young, Dr. Caleb Marsters, Dr. Tia Reihana-Morunga, Associate Professor Melani Anae, Professor Vaitusi Nofoaiga, Vice-Chancellor Damon Salesa, Pro-Vice Chancellor Pacific Associate Professor Jacoba Matapo, Dr Sarah McLean-Orsborn and so many more.

I mention their names as they have had an impact on me personally or I have read their works and have been major fans of their work and how they push the envelope in offering strengths based research that benefits our Pacific communities within scholarship but also within a grassroots level too. I try to reflect and challenge through writing but also be myself as I engage and write weekly articles aligned with the issue themes of Craccum.

There are moments where I get scared, or that I could be doing more or I have

imposter syndrome as I write as Pasifika editor wondering if it's benefitting anyone to be honest. But in my heart I continue to write to bring awareness, or highlight the beauty and the positives of anything 'Pacific', but also challenge the narratives of politics from my subjective Pacific perspective.

I am honoured to be in this role and I cannot wait for another person to take the mantle next-year and write from an unapologetic Pacific voice and continue to make noise in the University. As we get so hyper visible or invisible in certain spaces within the institution which sometimes drains our souls due to this capitalist eurocentric form of education that historically wasn't made for us.

This then highlights why we need Pacific students and stories to help our communities find a way forward. And so the next Pasifika editor coming up I cannot wait to see you take this role further in places I may have not, and continue the threadings of stories to resonate with our people.

OCTOBER
FRIDAY
18TH

zuum
energy gum
PRESENTS

LIVE AT:
DUX CENTRAL
144 LICHFIELD STREET

DOORS OPEN AT 6:30pm

DTG HOUSE BAND - CON CARNE
WARMS UP THE PA 7:30pm

DTG UNI BANDS
TAKE THE STAGE 8pm

DIG[®] THE GIG.

WE HAVE WAITED FOUR YEARS BUT IT'S FINALLY HERE NEW ZEALAND...

DIG THE GIG NATIONWIDE GRAND FINAL 2024



DIG THE GIG UOA 2024 WINNERS
BLISS



DIG THE GIG OU 2024 WINNERS
THE BEATNIKS



DIG THE GIG VUW & MU 2024 WINNERS
DREAMS OF THE DAMNED



DIG THE GIG UC 2024 WINNERS
RED WEEKEND

TICKETS \$40 - GO TO WWW.DIGTHEGIG.NZ

THANKS TO OUR AWESOME SPONSORS

SCENIC HOTEL GROUP
NEW ZEALAND OWNED & OPERATED



RECYCLE
BOUTIQUE



LIMITED TICKETS SALES SO BE IN SUPER QUICK!







THE SRN IN ASSOCIATION WITH NZ ON AIR
PROUDLY PRESENT

THE MIGHTY AOTEAROA ALTERNATIVE AWARDS 2024



SATURDAY 2 NOVEMBER, 7PM

TUNE IN LIVE TO 95bFM
STREAMING LIVE AT SRN.NZ

WHAT IS HAPPENING!?



Much of the controversy surrounding the bill is that it is an anti-Māori legislation. The anti-Māori idea has come from the bill not recognizing the collective rights of iwi Māori and does not guarantee their relationship with the crown. This has led to protests and criticism from Māori and non-Māori, with Māori translators advocating that the bill was based on a flawed translation of te Tiriti, which has failed "international translation ethical standards." More concerns that surround the bill are that it lacked a compelling policy reason to justify its development, took an unconventional approach in its Treaty interpretations, was shaped by a misleading historical narrative, and misrepresented the wording of Te Tiriti o Waitangi. Here, we need to acknowledge that already 440 Christian leaders and over 150 organizations and community groups signed two separate open letters to Christopher Luxon to vote down the Treaty Bill. This shows how much disdain the bill already has, you would think the government would listen more closely. From that outcry, it becomes more or less evident that during the development of the Treaty Principles Bill, Māori were not

As New Zealand attempts to balance individual rights and recognition of iwi and hapū, the important question is whether a bill that excludes key Māori voices truly serves the nation's best interests? If there is failure to address these concerns, how can we ensure that the future policies genuinely reflect the principles of Te Tiriti o Waitangi? This moment presents an opportunity to reflect on the importance of inclusive law-making, where all communities have a seat at the table.

17

Truer than you were

PADRIAC O'LEARY

In the deck of the night
 With the banally wicked
 And a drink for the pusillanimous
 And smoke gently stoking me
 Saccharine tunes drop
 And i drown them out with music
 And the people.
 The beautiful white people
 Get on my thungas
 But then im here for Peter.

And the beautiful couple and so i
 Envy them
 Obviously
 Yet i dont change for them
 So why come?

Oh peter. And to look of course.

And the mist embraces all
 Damply disinterested
 And women play
 And friends talk
 And peter works.

And booze soothes as i think of dive brothels and
 Old love and so
 And so
 And so.

The Stroll

PADRIAC O'LEARY

Desparations handmaid
 Flows by plastic
 Clapsed in loving embrace
 And sake soothes the
 Eye ache of having
 Borne witness

Her tale a mystery of
 Cleched stories and
 Predictable losses
 And the wealthy
 Saunter by like
 A corpuscule drip
 As we the enfranchised

Smoke and drink
 Gaggles and houris
 Light and well trimmed
 Beards
 While thousands in
 Acreted capital
 Convey us out and
 Home in expensive
 Sleeves and leather
 Alt sheik and
 Topknots
 Told by an idiot
 In ink and silence
 On the road

Always the road

Looking at the Binary-Coloured Girl

GLOBUS MOBUS SR.

So at a gig last Friday
I met a girl who came to stay
We interlocked with eyes a-flare
And a face that I saw everywhere
With a binary colour code

A chick that had been flying high
Tinged the tongue licking lye
With iris' blue and hair alight
Equalling her conversational appetite
About a drying face against the road

The music was loud, the people were tired
But not the girl that never expired
The glare across the room of crazy glances
Dancing in between boys and girls jousting lances
But my hips, too weary, sink between the mode

Now the dynamic darling wants to go
So we set out all on our own
To find another place to stay
Where hearts aren't baying with dismay
Her departure setting lighting low
Despaired, I sing a heartstrung ode

Don't ever let her go...
Because all she'll cause is woe.



CHRISTIANITY VS RAINBOW COMMUNITIES WITHIN A PACIFIC UMBRELLA

THE INTERSECTIONALITY OF IT ALL



IATUA FELAGAI TAITO

Anyone that is Pacific should understand the huge influence of Christianity within the Pacific. It is so interwoven in the fabric of Pacific cultures it makes me wonder why?

Let's be analytical around questions to ponder on shall we... Who brought Christianity into the Pacific?, what is it about this specific religion that resonates with our Pacific cultures? Do Christianity and Pacific ways of being mesh well or should they be separated?.

I am asking these questions not to answer them but to be a point of departure around how to unpack this. And to add to the complexity, what about our Pacific Rainbow communities who happen to be in a Christian religion? Are they safely represented?.

There is a huge conflict around these two groups and it is because biblically there are passages that show a profoundly negative light on the other. It also is hard when we delve into the conversations around gender and sexuality as both of these communities have strong opinions that have contention all the time.

But imagine Christian communities and

Rainbow communities within a Pacific lens... it gives me trauma thinking about it because as someone who is of both groups or communities within a Pacific context is hard as you are an in-between of these worlds.

I recommend people reading up on Professor Kimberlè Crenshaw around her articles of 'intersectionality' as it provides a theory that can intersect around gender, race, socio-economic background and age to understand people's complexities.

And applying it theoretically to understand being a part of three communities (Being of Pacific descent, a Christian and being a part of the Rainbow community in Aotearoa) shows a way of understanding and being in the world.

I navigate this journey of struggle and beauty as it has definitely made me hyper aware around the sensitivities and conflicts that exist in between and in parallel within Christian and Rainbow communities particularly within a Pacific context.

I don't have answers per se, but I do have thinking points for people to consider when delving into these topics. In a nutshell, have the decency to listen, because it is easy

to dish out your opinion but to be human you sometimes need to be strong enough to hear an opinion that you don't agree with and simply listen as you might learn something. Another thinking point would be to say it with the intent that it is coming from a place of care and love, because sometimes it isn't what you say but how you say it that causes the contention.

A thinking point to remember is to treat people the way you want to be treated when expressing opinions on those two communities as it really is people's livelihoods that are authentic to them.

Lastly is to continue to be courageous and question everything because it allows you to be critical and analytical. As I know one thing that is worse than expressing opinions that might not be popular, is someone who is following the crowd and doesn't even do research to I guess have the intellectual capability to rebuttal or form a legitimate opinion based around these specific communities. So do your research and check your prejudices to really contribute to these types of discourses as it is still a touchy subject.

HIBISCUS & RUTHLESS

THE UNPACKING OF SAMOAN WOMEN



IATUA FELAGAI TAITO

When I think of Pacific films in cinema one comes to mind which is 'Hibiscus & Ruthless' directed by Stallone Vaiaogaloasa. The film is based around the Samoan woman Hibiscus and her obedience to her mum's rules, which gets put to the test in her final year at the University. Where guys start to hit on her and show interest in her and so she has her friend Ruth to help keep her focussed on passing her final year without boys being a distraction.

This film is iconic to me as it touches upon a Samoan upbringing in Aotearoa New Zealand for Samoan women and how the expectation to be a good Samoan young women (who doesn't go out, doesn't drink and not dating) is overwhelming when you just want to have freedom and the agency to make mistakes. This cinematic movie came out in 2018 and still is felt today around the complexities and integral roles Samoan women have in Samoan society and in the diaspora.

The expectation to be perfect and to be 'good' all the time is dangerous, as it makes it difficult to make mistakes and be human. Which means to experience the good and the bad of what life encompasses. As a result, you see the breakdown of that in this film. It is deeply important to understand the term 'Tautua' which in English translation means 'service'. And this notion of tautua is embedded within

the fabric of Samoan society. And when you tautua constantly to the detriment to your mental health and well-being that becomes harmful and this cinematic film shows those themes respectively. It delves into the Fa'a-Samoa (Samoan way of life/ Samoan culture), the Gagana Samoa (Samoan language), Samoan colloquialisms and shows the diasporic struggle for those that are Samoan women. For instance; to look after their parents, do feau's (chores), contribute financially to family (extended and immediate) matters and church, be an active church member, work many jobs to make ends meet and to excel in school.

This pressure is heightened for Samoan women in traditional settings in the diaspora that it causes a lot of mental health issues dealing with the tautua. But tautua can also be framed in a positive way, as within Samoan culture reciprocity and respect are key values in Samoan epistemology. And so to be of tautua, reaffirms the vā (relational space) of relationships of

the hierarchy that exists in Samoan culture. Relevantly, this film touches upon all this mentioned prior in major and subtle ways and captures the cultural nuances on film around this community. So watch it if you get the chance!



FAIR • SUPPORTIVE • INDEPENDENT • CONFIDENTIAL

**We offer
advice about
your rights,
university
procedures,
tenancy
and more.**

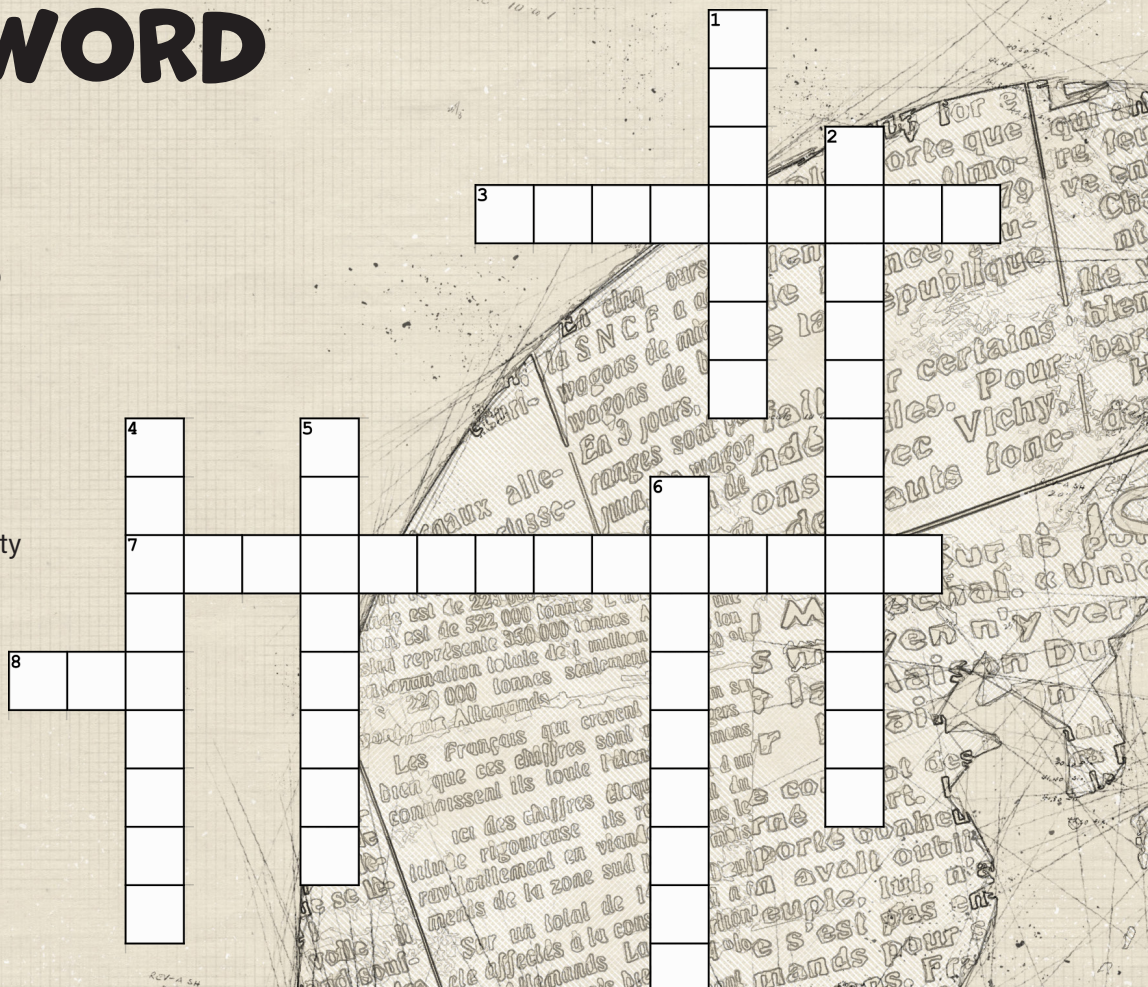


student support hub

📍 **AUSA house, 4 Alfred St, Opposite the Main Library**
☎ **09 309 0789** 🌐 **www.ausa.org.nz** ✉ **advocacy@ausa.org.nz**

8. extended kinship group

6. racial inclusivity



WORDSEARCH

H Y
 D B
 F Z W J
 V N H X
 P T M S D M
 D L O A U F
 E Q Z V A P O H E D O E I R O A M R L Q
 J H U C W K H V F O R D M L C E Y J X E
 W Q N O K X X M O A K J B S M R E R
 G N S M L O S S E R G O R P M U
 Y C C M E R U T L U C S I T
 X A W U F S O M U G A U
 Z J A W D N Y A O S O F M R
 S B O X B E I K C A G A U U
 D N A L K C U A T P V D C O H H
 T M U Q X Z P Y C H A N G E
 Z Y L P T A O L C W W S R N
 D H Z H N B W S C B
 C J W B V T W S
 J I D

**MAORI
CULTURE
COMMUNITY
PROGRESS
FUTURE
AUCKLAND
AOTEAROA
CHANGE**

				9	7	4		
	1	4	3	2	5		8	
	9	5	1	4	8			3
9				3	2	8		4
		8	7	6				2
2		3		8			6	5
						1		7
			2	1	6	3	4	
4		1			3	5		6

SUDOKU

					6		2	
				1				
2	4		8	3	9			6
					5			
	7							
1				6	2			
3					8			7
	1			2	7			9
	8	6			3			

				3		7	5	4
5	8		9		6			
4				5	7		8	6
	6		3	7				
9						7	8	
7	2			8	4	6		9
	7			1	3			5
		5			2		9	7
					4	2		

WORDSEARCH

W M K
 B U Y M A O Q H M
 G O N X E Z K K V T T C K
 I I V A O E F N Z T X C N P F Y Y
 B R P C F V H W Q N V K E T R Q X J Q
 B I L A Z N W V S K D H P L U X Y T U O
 J C F T A C U I Z N D B K S J P R S B L G
 Q L T R K T C D B L F Y P A E T H K H T W C I
 O S J G E E D U R Z R B K I R W F R G R U H N
 Q P G Z J C Z O K P T J J X T Y J K F S H O G V P
 Z X H K O N Y L I M A F K I I A E L A R A I A W O
 S S O K W A Y L E G L Q I K A T T R O U W L U K T
 J R E W B S T I S N Q W U H P K I K M K V S N A A U G
 C O J W M K P O E Y Y N M V Z I T A M E O E I A Q Z P
 C W N U V M E E W X B A N W X T J R G J K U T N P O A
 Y W I H I C R S Z U F B A N A F A R J Y L H D T Z
 F A Z H A C F I T P W S I G N U K J L W A F M H H
 N Y N Z O A A R Y L L Q W D G O I S Q L V K Z O M
 B R N N R P Z G A A J Q N A I A L A X Y J J C
 G Z L H G I H Y J X R A C Y E U F C T T G Z P
 E C D R I J Z X P L N M Q P W H T A O K F
 V N W T L O J T U K V J A A Y V U Q C Z B
 Q P I F P J J J W A O C Q A G R O V Z
 Y H S X A N P P Y I P W M T M T T
 N R R K H S Y E T U L J X
 K E N A Q N T G G
 R E X

**KARAKIA
 KAITIAKITANGA
 FAMILY
 VALUES
 LOVE LANGUAGE
 RESPECT
 ACCEPTANCE**

HOROSCOPES



LEARN
MORE



CLARICE DE TOLEDO

Hey everyone! This week, we're halfway through eclipse season with a Solar Eclipse taking place on **Wednesday**, October 2nd. While lunar eclipses tend to be more emotional, solar eclipses tend to bring a lot of change and transformation, they mark endings, beginnings and significant events. It's a time to let things flow rather than rushing to decisions, as the sun is in shadow, and things may not seem as clear. This Solar Eclipse is taking place in Libra, it makes the perfect time to restore balance and gain a fresh perspective on a certain area of your life. The signs that will likely feel the most impacted by this eclipse are the Cardinal Signs: **Aries, Libra, Capricorn and Cancer.**

ARIES

This eclipse will activate your relationship sector, whether it's romantic, business-related, or a close friendship. You could experience shifts in the way you relate to others. There could be some tension, or conflicts around this time, but it's also an opportunity to release old patterns that could be holding you back and find a way to balance out the difficulties. It's a chance to reassess what isn't working anymore. If you're a freelancer or work with clients, you may notice increased interest in your services during this time.

TAURUS

For you, this eclipse will be falling on your 6th house of health, work and routines. It will be a great time to restructure and balance your daily life. You could be adopting new habits and becoming more mindful about wellness. There could also be adjustments happening around work, you may be reflecting more on how you approach and mindset regarding the work you do, or the ways your work is structured. You might be seeking for a better life-work balance, or wanting to do something more meaningful and aligned with your values.

GEMINI

The Solar Eclipse in Libra will be landing in your 5th house of creativity, joy and romance. You may be reflecting on how your mindsets and approach towards your creative process has changed, or how you've learned to have more confidence as a result of following your passions. Connecting with what brings you joy makes you you, and you may be in the process of realising that. Your love life could be coming to the surface, you may feel more inclined to date or spend more romantic time with your partner.

CANCER

This eclipse will be taking place in your 4th house

of home, family and your private life. You may be feeling more introspective than usual or being busy with activities around your home, like redecorating or making little improvements and nurturing your inner world. It could also be that important events take place in your family's life. And if family is a difficult topic for you, it could be that this time encourages a lot of healing and shifts within your dynamics, you may be talking more about them at therapy, or realising how to relate to them better.

LEO

The eclipse will take place in your 3rd house of communication, learning and local community. You could be noticing shifts in how you express yourself and communicate your ideas, that could be through writing, speaking, teaching or creating content. It's the perfect opportunity to spend time on a project that involves learning or communication. There could also be major events taking place around your neighbourhood or in a sibling's life. On another note, it could be a good time to explore new spots around town!

VIRGO

This eclipse activates your 2nd house of money, values, and self-worth. This will be the third eclipse happening in that area of your life in the past year. You could be reconsidering how you manage your financial situation or you're undergoing changes regarding your income. If things have felt stagnant, you could expect things to start to improve, you may be learning how to rework your budget or finding new ways to increase your income. On another note, this eclipse could be a good opportunity to reflect on your self-worth and values and whether it aligns with your financial habits.

LIBRA

With the eclipse in your 1st house, you're at the centre of everything! I know, it feels great to hear that. This could be a really deep personal reset, a time that encourages you to focus on yourself, how you present yourself to the world or how you think about yourself. This might be a timing that you will be shedding what no longer serves you, certain relationships, mindsets or situations that you had outgrown. You're learning how to put yourself first, and make your wants and needs a priority.

SCORPIO

For you, this eclipse will be influencing your 12th house of spirituality, the unconscious and mental health. You could be feeling more introspective, low energy or embracing closure regarding a situation of your life. You may be reflecting more on your emotional self and your mental health, learning how to let go of unhealthy attachments and better

understand your emotions. You might be connecting more with your sense of spirituality, and taking more time to rest. It could feel that a big chapter in your life is ending, for another to begin.

SAGITTARIUS

The solar eclipse will be happening in your 11th house of friendships, groups and long-term goals. You may wanna reflect on how your friendships, what connections feel right to invest in and what ones feel the most distant. Usually, it could also indicate major life events happening to people around you, like people having babies, getting married, moving to a new city, or landing a new job. On another note, although it may feel like you've outgrown certain relationships, you could spend more time around the people that you do care about!

CAPRICORN

The eclipse will be taking place in your 10th house of career and your public life. This could mean that you're undergoing change in your professional life in some way, that could be a shift in your career path or overall life direction, or feeling more recognized for your work, or stepping into a new leadership role. You may feel drawn to reassess your ambitions, and get clear on what responsibilities and relationships are worth committing to, and if you don't know what you would like to do for work, that's ok too!

AQUARIUS

The eclipse will be impacting your 9th house of higher education, travel, and beliefs. You may be undergoing major changes regarding your life core beliefs, mindsets around dealing with difficult times, sense of spirituality and the bigger picture of things. It's a powerful time to explore new ideas and expand your worldview. Or it could even be that you'll be going on a trip overseas or planning to go in the next few months. You could be in touch with other cultures and other ways of thinking, as this eclipse encourages broadening your horizons.

PISCES

The eclipse will be activating your 8th house of shared resources, intimacy and transformation. You may be wanting to get more on a deep level with people around you, and coming across themes like vulnerability and trust. You could be craving a deeper connection, platonic or romantic, and you're learning how to open up more. Or it could be that, if you're in a relationship, you're learning how to approach conflict in a healthier way, and you're unlearning certain behaviours when it comes to relating to people.

SHADOWS

YOUR STUDENT BAR

EVERY TUESDAY

\$10 BURGER & FRIES NIGHT

ALL DAY



Buy a drink off tap and get a \$10 burger & fries

Terms & Conditions apply

ALL DAY

2•4•1 PIZZAS
EVERY WEDNESDAY



BUY ANY PIZZA ON THE MENU AND
GET THE SECOND ONE FOR FREE

Terms & Conditions apply

EVERY WEDNESDAY

STUDENT NIGHT

ALL NIGHT

\$5 BETTER BEER
\$5 SHADOWS TIKI PUNCH
\$6 SHADOWS SHOTS
\$8 SCAPEGRACE RTD
\$10 SHADOWS JUG ALL NIGHT
2 FOR \$15 RED BULL VODKA

HAPPY HOUR 9PM - 11PM
DJ FROM 9:30PM

CHEAPEST BEER IN AUCKLAND AT
THE BEST STUDENT BAR IN AUCKLAND

EVERY THURSDAY

2 FOR \$25 COCKTAILS

ALL DAY



CHOOSE 2 COCKTAILS FROM OUR SELECTED RANGE
FOR ONLY \$25

Terms & Conditions apply

ALL DAY

\$5 NACHOS
EVERY FRIDAY



BUDGET MEAL SORTED
GOES WELL WITH A MARGARITA OR BOTTLE OF SOL

EVERY DAY

3pm - 5pm AND 9pm - 11pm

HAPPY HOUR

\$8 WINES
\$10 SCAPEGRACE G&T
\$11 HAZY OR TIGER CRYSTAL
\$12 MARGARITA OR ESPRESSO MARTINI
\$18 BETTER BEER BUCKET



EVERY TUESDAY

QUIZ NIGHT

\$10 BURGER AND FRIES COMBO • BAR TAB PRIZES • GIVEAWAYS



FROM 6PM

REGISTER VIA INSTAGRAM @SHADOWSBARNZ

SHADOWS BAR - OPPOSITE THE MAIN LIBRARY • OPEN MIDDAY TIL LATE • MONDAY - FRIDAY



SHADOWSBARNZ



EVENTS@SHADOWS.CO.NZ

KIINGI TUHEITIA PORTRAITURE AWARD

URU MAI
INĀIANEI!

ENTER
NOW!

Taumata Toa
\$20,000

First Prize
\$20,000

Ka mutu te
20 o Maehe
2025

Closes
March 20
2025

