

378.95  
C88

# CRACCHUM

UNIVERSITY OF AUCKLAND

26 FEB 1986

GENERAL LIBRARY

THE SPIRIT OF AUCKLAND UNIVERSITY

## Orientation '86



Orientation Update  
Late Enrolment Details



P 880 08792

NZ &amp; PACIFIC

378 00

C88

1986 v.60

no. 1-25

## NOTICES

UNIVERSITY  
LIBRARY  
TOURS

The General Library will run tours for new students as follows; (Departing from Library foyer) –

**FIRST WEEK OF TERM**

Monday 3 – Friday 7 March at 11.10am; 12.10pm; 2.10pm; 3.10pm; 7.10pm.

**SECOND WEEK OF TERM**

Monday 10 – Friday 14 March at 11.10am; 2.10pm.

**THIRD WEEK OF TERM**

Monday 17 – Friday 21 March at 11.10am; 2.10pm.

**'THE UNIVERSITY CLUB'**

**DID YOU KNOW** that if you are over 20 years of age, you are eligible to join the **AUCKLAND UNIVERSITY CLUB**? We are just across from campus at 23 Princes Street. A great place to meet friends, have a drink, play pool, dine in our excellent restaurant. **SPECIAL STUDENT RATES \$30 ANNUAL SUBSCRIPTION.**

Other subscription rates available on enquiry. Call in or phone Christine on 73-2279.

Auckland  
Peace Forum  
February

Wednesday 26th  
**PUBLIC MEETING – JOHN GALLAGHER** (NZ Nuclear Free Zone Comm) "Positive Neutrality & NZ's Economic Future and The Defence Question".

7.30pm at St Albans Scout Den, 132 Grange Rd, Mt Eden.

**March**

Saturday 1st  
N.F.I.P. DAY – Local group activities??  
Tuesday 4th  
**PEACE FORUM MEETING – 7.30pm,**  
at the WEA, 21 Princes St.  
Wednesday 5th  
**PEACE STAMP ISSUE**  
Saturday 15th  
**MT EDEN FAMILY DAY FOR I.Y.P. –**  
At Potters Park, 11am-4pm. Dance, Music. Peace Groups are invited to have fundraising and information stalls. Contact Peace Office by the 28th Feb.

DEFENCE  
REVIEW  
SEMINAR

CE 1. On 15 March 1986, at the University Conference Centre, 22 Symonds Street. 9.00am to 4.30pm \$18.00.

A penetrating look at the Government's recently released Defence Review, with new emphasis being placed on greater self-reliance and independence with both foreign policy and defence. Informed and pertinent speakers include Captain Ian Bradley (RNZN RTD), Rev Ray Galvin (MacLaurin Chaplaincy), Kathleen Ryan (WAND), and Peter Willis (SANA), amongst others.

Further details from –  
Centre for Continuing Education,  
5 Symonds St. Telephone 737-831.

LAW STUDENTS SOCIETY  
BOOKSTALL

Books will be *accepted*:

Tues 25th  
Wed 26th Feb  
Thurs 27th Feb  
9am - 5pm Society Common Room  
4th Floor

Fri 28th Feb 9am - 2pm  
Mon 3rd March 8am - 10am

Books will be *sold*:

LAW I Mon 3rd 1pm - 3pm  
LAW II Tues 4th 11am - 2pm  
LAW III & Prof Wed 5th 10am - 1pm

Catholic Centre  
Newman Hall

See the noticeboard at Newman Hall Catholic Tertiary Centre (16 Waterloo Quadrant) for details of the following Orientation events:

- Beer and Bikkies with the Bishop; light refreshment provided,
- THURSDAY, 6th MARCH  
12.30 to 2.00pm
- MONDAY, 3rd MARCH
- All night video
- Celebrity debate

## Costume Debate

The highlight of Orientation Week, the Debating Society is megalomaniac enough to present its annual Time/Space Debate. Gathered from the 40,000 corners of the Time/Space Continuum, The Chairman, Mao Tse Tung, has gathered together a select group of heros to debate: "That we should return to the days of the Empire".

Affirming are: Darth Vader, Queen Victoria and Caligula while Indira Gandhi, Patti Hearst and Pope Alexander II will negate. For a once in a lifetime experience and chance to meet some of the naughtiest people in history, we urge you to attend.

Because of a double booking at the Hanging Gardens, the debate will be held in B15 (that's under the library) on Wednesday the 5th of March at 1pm.

(Paper darts available on request & donations of one dollar to cover mega-expenses will be greatly appreciated). Further details phone 767-500.

Student  
DiscountsSTOP PRESS! FROM THE  
EDITOR

Last year I promised Student discounts and that promise has come true. In an exclusive special arrangement with the MERCURY THEATRE Crackers ... Craccum is pleased to announce that special student discounts now apply from MERCURY. Aptly named STUDENTS' SPECIAL STANDBY ... they are available for both MERCURY ONE AND TWO THEATRES – MONDAY TO SATURDAY. Yes, That's right, MON – SAT Inclusive! Call at the Mercury Theatre booking office personally after 7.30 before each performance. Show your University of Auckland Student Card and if available a seat is yours for \$5 – 5 bucks! The special offer is only available to Ak. Uni. students, on trial for 1st term. Keep your eyes peeled too for special passes and Mercury opening night specials. BROUGHT TO YOU BY CRACKERS ... of course!

ORIENTATION  
1986

Orientation is the name given to the festival in the first two weeks of the University term. It is designed to introduce new students to University life in an interesting and fun manner. It is also, of course, for all returning students. University can be pretty bewildering and disorientating when you first arrive so in keeping with that we have made the idea of a maze our theme.

## THE MAZE

Check out the Maze construction in the Quad. That is the centre of it all! From there, you can find out what's going on during Orientation, pick up an Orientation programme, buy an Orientation Card and an Orientation T-shirt.

## ORIENTATION CARDS

These cards are well worth while at the price of \$8. They give you discounts or free entry into Orientation events. They are available from the maze, the lower common room, and the Orientation Centre (Room 202).

## ORIENTATION T-SHIRTS

To remember Orientation '86 you can buy yourself a T-shirt with the attractive and colourful design. There are two styles of T-shirt - normal and Chinese style. Their prices are for cardholders, \$12 and \$15 respectively and for non-cardholders \$15 and \$18 respectively.

This year there is lots of music, theatre, films, and club events for you to enjoy. This week is really just the beginning of Orientation but there are some great acts to entice you.

## EXCITING UP DATE ON ORIENTATION '86

**TUESDAY MARCH 4**  
N.O.R.M.L. Day (Consensus Day)  
11am to 1pm  
2pm to 4pm  
SHADOWS  
1pm to 2pm  
Quad  
Marijuana Law Reform Debate

**THURSDAY MARCH 6**  
8pm  
Shadows  
The Remarkables (cover charge)

**FRIDAY MARCH 7**  
1pm  
Gym Club rm  
Strength and Health Club  
A.G.M.

**SATURDAY MARCH 8**  
5pm  
Cof Lge  
U.M.S.A. Evening

8pm Cafe  
Campus Radio Concert

**WEDNESDAY MARCH 12**  
8pm Cafe  
Netherworld Dancing Toys.  
Cardholders \$6  
Non-cardholders \$8

T-Shirts.  
Normal - Cardholders \$12, Non-cardholders \$15.  
Chinese - Cardholders \$15, Non-cardholders \$18.

Daily through Orientation - National Bank 'Stage 1' video 20th Feb - 28th Feb screens answering your questions about University during Enrolment (Rm 144).

**CORRECTIONS:**  
**TUESDAY MARCH 4**  
11am to 4pm  
N.O.R.M.L. Day (Consensus Day)  
2pm to 4pm  
Shadows  
Bands  
1pm to 2pm  
Quad  
Marijuana Law Reform Debate

1pm  
5pm  
8pm  
Goodbye Pork Pie  
Mr Wrong  
Constance

**FRIDAY MARCH 7**  
1pm  
Gym Clubrm  
Strength and Health Club  
A.G.M.

**SATURDAY MARCH 8**  
5 p.m. U.M.S.A. Evening  
Cof Lge

8pm  
Cafe  
Campus Radio Concert.  
Promote their record 'Outnumbered by Sheep'

**MONDAY MARCH 10th**  
Women's Concert - Shadows  
The Pickets  
Matua Tocker  
Putty in Her Hands

**WEDNESDAY MARCH 12**  
8pm  
Netherworld Dancing Toys.  
Cardholders \$6 - Support The Dolphins  
Non-cardholders \$8

T-Shirts.  
Normal - Cardholders \$12, Non-cardholders \$15.  
Chinese - Cardholders \$15, Non-cardholders \$18.

## STOP PRESS:

**TUESDAY MARCH 4**  
11am to 4pm N.O.R.M.L. Day  
(Consensus Day)  
11am to 1pm  
2pm to 4pm Bands, Shadows.  
1pm to 2pm Marijuana Law

1pm to 2pm, Quad. Marijuana Law Reform Debate.

**THURSDAY MARCH 6**  
8pm Shadows, The Remarkables.  
(cover charge)

**FRIDAY MARCH 7**  
1pm Gym Clubrm, Strength and Health Club A.G.M.

**SATURDAY MARCH 8**  
5pm Cof Lge, U.M.S.A. Evening.  
8pm Cafe, Campus Radio Concert.

**WEDNESDAY MARCH 12**  
8pm Cafe. Netherworld Dancing Toys. Cardholders \$6,  
Non-cardholders \$8.  
T-shirts.

Normal - Cardholders \$12,  
Non-cardholders \$15.  
Chinese - Cardholders \$15,  
Non-cardholders \$18.

## UNIVERSITY OF AUCKLAND

Thurs 20-Fri 28 February  
Mon 3 March  
Fri 28 March-Tues 1 April  
Fri 25 April  
Thurs 8-Fri 9 May  
Sat 10 May  
Mon-2 June  
Tues 3 June  
Fri 27 June-Sat 5 July  
Mon 7-Sat 12 July  
Sat 16 August  
Mon 8 September  
Fri 10 October  
Sat 18 October  
Fri 24 October  
Mon 27 October  
Fri 31 October

Enrolment Period  
TERM I BEGINS  
Easter Recess  
Anzac Day  
Graduation  
TERM I ENDS  
Queen's Birthday  
TERM II BEGINS  
Engineering Examinations  
Mid-Term Break  
TERM II ENDS  
Lectures end  
Degree examinations begin  
Engineering lectures end  
Labour Day  
Engineering Examinations  
TERM III ENDS

Tertiary  
Grants

The following are the proposed dates on which Tertiary Assistance Grants will be paid in 1986:

16 APRIL  
Ten Weeks of Study Grant  
11 JUNE  
Nine Weeks of Study Grant  
13 AUGUST  
Nine Weeks of Study Grant  
1 OCTOBER  
Nine Weeks of Study Grant

New opportunities for writers, cartoonists, photographers, reviewers, designers, commission sales-persons and dedicated staff on Craccum '86.  
Please call in, phone or write to Craccum office now!



## CHANCELLOR'S WELCOME



I am delighted to have this opportunity to welcome students to the University of Auckland. A University is not a collection of buildings on a campus - it is a community of people - and you are now part of it. We are proud to be now in our 103rd year and we look to the future with great confidence.

A University is basically a storehouse of knowledge and centre for research with the prime responsibility of passing that knowledge on.

You are here not only to participate in a learning process but also to join in all the activities of what is a large and important community within the Auckland region.

The University provides many facilities for your benefit including Careers Advisory, Health and Counselling services. The Recreation Centre on campus, the playing fields and tennis courts at Tamaki are for your use.

The Students' Association represents you and provides an umbrella for Clubs and Societies both Cultural and Sporting. You should support your Association in its programmes.

It is very important that you not only profit from your time here but also that you enjoy yourselves. On behalf of the whole University, a warm welcome and every good wish for the future.

*R.H.L. Ferguson*

R.H.L. FERGUSON  
CHANCELLOR

## PRESIDENT'S WELCOME



Welcome Back,

I won't ask if people saved enough money to continue their studies, as I know a number of students would have been affected by the government cutbacks on the student summer job scheme.

This is our first issue with an elected Editor. Peter was elected on a policy of more student news, with the view of involving the University community in the newspaper.

Given past dis-satisfactions with the tenor of the paper, and student's desire to have greater responsibility in the University's decision making process, (last year we raised a petition of over 4,000 signatures calling for greater student representation on University committees - the largest student petition ever on a single campus!)

I believe this new outlook can be nothing but productive. An elected Editor will also be accountable to the dynamics of student opinion.

I'm always available - my office is in the ground floor of the Student's Association building. Should you need to discuss any problems, concerns or interests, please don't hesitate to approach me. Use the facilities and opportunities the Student Union provides to extend your horizons, good luck with academia; and 'get into it'.

*G.P.J. Watson*

G.P.J. WATSON  
STUDENT PRESIDENT

## VICE-CHANCELLOR'S WELCOME



I was delighted that the Editor of Craccum, Peter Boys, asked me to provide a welcome to students in the first issue of Craccum in 1986. Also I was pleased to hear that for 1986 Craccum will be focusing on the considerable community here within the campus.

The University community is now very large indeed. Some 13,000 students, over a thousand full-time staff and one to two thousand part-time staff. Also it is a very diverse community - students enrolled in nine faculties and academic, administrative, technical, trade, library and welfare staff. There are many stories and issues of interest to students and staff within this community and, therefore, I welcome the Craccum policy for 1986.

To all students I extend a very warm welcome to the University of Auckland for this academic year. I hope that you find your studies worthwhile and that you become involved in other University and AUSA activities. May you have a most satisfying and enjoyable year at the University in 1986.

*Colin Maiden*

C.J. MAIDEN  
VICE-CHANCELLOR

## IMPORTANT MEETING FOR ALL

### FIRST YEAR STUDENTS

As part of your orientation to Auckland University, your presence is required at a meeting to be held in the Recreation Centre on Thursday 13th March at 1pm.

The meeting will be addressed by the Chancellor of the University and the President of the Students' Association, and you will be introduced to the Executive of the Students' Association.

## RECREATION CENTRE THURSDAY

13TH MARCH AT 1PM



# FOOTLIGHTS

## PASS IT ON by Renee



## THEATRE CORPORATE



Ph. 774 307

United

OPENS SAT. MARCH 1st.

### PASS IT ON

Theatre Corporate's first main company production for the 1986 season, is Renee's PASS IT ON.

This enlightening, moving and often witty play picks up the story of Cliff and Jeannie 17 years after the events of WEDNESDAY TO COME and finds them again fighting for survival and their rights in the face of great political and social upheaval. This time takes the form of the 1951 Waterfront Lock-out.

Scabs, pickets, regulations, illegal bulletins and marches, all are words which evoke strong emotions and memories and all are embraced in PASS IT ON. Many New Zealanders now, 35 years after these events will still recall the often heart-breaking choices made by them or their parents to fight for what they believed even though it meant there was no coal in the bucket or money to pay the Butcher.

Theatre Corporate has assembled a strong and powerful cast for this equally powerful drama. Michael Hursst, Jennifer Ward-Lealand and John Watson all rejoin the company to take the main roles along with Judith Gibson, recently seen at Corporate as Rosa in Hooters, Trumpets and Raspberries, while Lillian Holiday in Happy End will play Jeannie, grown up now and still trying to "bring the plight of the underprivileged to public notice".

Renee joins Theatre Corporate this year as a writer-in-residence, will be working closely with Director Roger McGill and Designer Donald Sunderland on this World premier of a very exciting New Zealand play.

PASS IT ON opens at Theatre Corporate on Saturday 1 March and plays until 12 April.

### ANNUAL OUTDOOR SUMMER SHAKESPEARE "AS YOU LIKE IT"

The Auckland University Theatre Workshop celebrates its 23rd Summer Shakespeare in 1986 with this popular Love Comedy under the stars, opening at 8.00pm in the Old Arts Quadrangle, Monday's to Saturdays to March 8.

Charmian Harre's Direction exploits the vitality of the play, staged courageously on grass in the beautiful natural setting of Pohutukawa trees and a historic basalt wall, overlooked by the Clocktower, in side the University ground. Entry is by Alfred, Princes or Symonds Sts.

As a change, "As You Like It" has an unusually large number of colourful female characters and as well as the requisite Lovers, Tyrants, Rustics and Fool this play is much loved for the excitement and pageantry of the wrestling match between the courtier, Charles (our resident incredible hulk, trained-by Robert the Bruce) and the downtrodden Romantic hero, Orlando de Bois.

Bookings: Ph 390-789 ext 862, from Midday onwards.

UNIVERSITY THEATRE WORKSHOP PRESENTS

## ~ AS YOU LIKE IT ~



25th OUTDOOR SUMMER SHAKESPEARE

FEB 15 - MAR 8, 8 P.M. BOOKINGS 390789



humanimals



# S & SPOTLIGHTS



## "MELTING MOMENTS" – LIMBS DANCE COMPANY AT THE MAIDMENT

Live music will enhance Limbs Dance Company's "Melting Moments" – a presentation of major classic works at the Maidment Theatre from Tuesday, February 25 to Sunday, March 2nd at 8pm.

"I feel the immediacy and vitality of live music can add to the memorable quality of major dance works", comments Mary-Jane O'Reilly, artistic director of Limbs Dance Company.

Vivaldi concertos will be played by the strings section of the Auckland Philharmonia Orchestra for Limbs' classically sculptural work "Halcyon", choreographed by Douglas Wrights that was a highlight of last year's successful "Life Music" tour. Conductor will be William Southgate, of the NZSO.

"Halcyon" is a beautiful dance of exultant optimism", says critic Raewyn Whyte in the New Zealand Times.

"Melting Moments" choreographed by Mark Baldwin in 1980 to a Dvorak score will be accompanied by the Auckland String Quartet. This lyrical, smooth-flowing modern-day exercise in adagio-partnering is a gem from Limbs repertoire of 150 original works. A stunning major work of the same vintage is "Saga", renamed "Cargo", choreographed by Mary-Jane O'Reilly.

### Tour Review

"The choreographer offers an impudent, beautifully staged view of a complex community and the struggle for power within it, all of it in almost abstract dance that allows the viewer's imagination fully play", wrote reviewer Jennifer Dunning in the New York Times after seeing "Saga". The score by Jan Preston and Neil Hannan and costumes by Jude Crozier perfectly

## LIMBS DANCE COMPANY



caught the dance's mix of parable and sly humour".

Jan Preston is well-known for her days in Red Mole and Coup d'etat and is now composing and performing in Sydney, while Jude Crozier is now a designer for New Zealand films.

"Reptile" choreographed by Mary-Jane O'Reilly to a jazz score by Kenny Burrell and the hypnotising "Ranterstantrum" choreographed by Douglas Wright to music by Glenn Branca, will be two further classic contributions to this programme.

Limbs is supported by Fay Richwhite Merchant Bankers and the Queen Elizabeth II Arts Council of New Zealand.

**AUCKLAND**  
TUES FEB 25 — SUN MAR 2  
8pm, MAIDMENT THEATRE

**WELLINGTON**  
TUES MAR 11 — SAT MAR 15  
8pm, MEMORIAL THEATRE

**DUNEDIN**  
SAT MAR 22 — 8pm  
REGENT THEATRE

**CHRISTCHURCH**  
WED MAR 26 — 8pm  
THEATRE ROYAL

Conductor: William Southgate  
Featuring strings sections of:  
AUCKLAND PHILHARMONIA ORCHESTRA  
WELLINGTON REGIONAL ORCHESTRA  
CHRISTCHURCH SYMPHONY ORCHESTRA  
DUNEDIN SINFONIA  
in each centre.

## MERCURY THEATRE

### MERCURY THEATRE MAJOR BARBARA

What happens when a millionaire armaments manufacturer meets his daughter, a Salvation Army Major, for the first time?

What kind of a family follows the custom of automatically disinheriting all legitimate heirs in favour of a founding off the streets who is given the name Andrew Undershaft?

G.B. Shaw called his play Major Barbara "a discussion in three acts" – and there's plenty to confront in this classic of the English theatre. Shaw was never greatly interested in certainties in spite of his reputation for speaking his mind. Conflicting opinions and viewpoints collide headlong in this highly dramatic and witty play.

Andrew Undershaft (played by Paul Minifie) is a forceful, brutally realistic man but his attitudes have something to teach the Salvationists. Lee Grant plays his wife, Lady Britomart, a

grande dame in the tradition of Oscar Wilde's fearsome Lady Bracknell – she is all for the traditional proprieties. One of her daughters is in love with a professor of Greek, the other with a classic English wit.

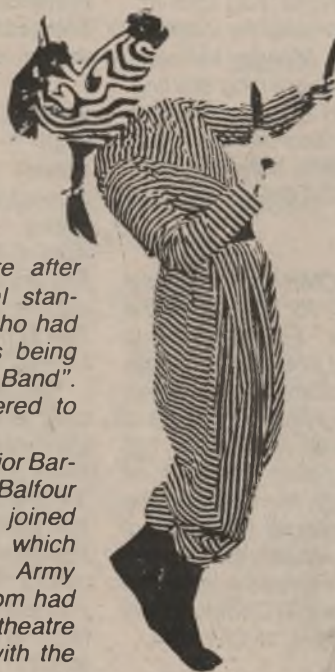
Her son Stephen (Christopher White) is destined for disinheritance according to the family rules. In the Salvation Army shelter lurks a band of social outcasts and desperadoes who supply the play with a richly comic base – Mrs Baines (played by Dorothy McKegg) and Rummy Mitchens (played by Bridget Armstrong) are two of the toughest. Ken Blackburn and Philip Holder play rough characters who tend to come off second best faced with the women. And, of course, there's a Salvation Army Band. Shaw was actually goaded into writing this play by his admiration for a concert given by 43 trombonists at a festival of massed bands in London's Clapton

Hall. He'd been invited there after defending the Army's musical standards in reply to a journalist who had described a horrible noise as being "worse than a Salvation Army Band". Shaw was incensed and offered to write a play on the subject.

At the first performance of Major Barbara the Prime Minister, Arthur Balfour and London's intelligentsia joined forces with a large audience which included uniformed Salvation Army Commissioners not one of whom had ever darkened the door of a theatre before. They were delighted with the production.

MAJOR BARBARA runs until Saturday March 1. Tickets range from \$7.00 – \$16.00 with generous discounts for parties of 10 more.

Performance times – Mon, Thurs – 6.30pm  
Tues, Wed, Fri, Sat – 8.15pm  
To book Phone 33-869.





# theatre, arts, music: whatzon

## 'QUEER PICTURES TO TOUR N.Z.'



### QUEER PICTURES TO TOUR NEW ZEALAND

In September 1985, a group of lesbian and gay artists was formed. The intentions of the group included promoting a positive image of lesbian and gay artists in the larger community, and providing an environment of mutual support within a university art environment.

In November 1985, the group opened its first exhibition, "Queer Pictures", which ran for three weeks in St Pauls Church, and included works from the fields of painting, video, photography, drawing, sculpture and printmaking. It is estimated that approximately two thousand individuals attended the exhibition.

This exhibition is now touring New Zealand, and will be on display in Auckland, Wellington, Nelson, Karama, Christchurch and Dunedin, and is timed to coincide with the third reading of the Homosexual Law Reform Bill. Auckland Counselling Rooms, Auckland University, March 3-14, (Monday to Friday). Opening night 6pm March 3.

### AS YOU LIKE IT

"All the world's a stage, and all the men and women merely players, they have their entrances and exits ....", immediately recognisable as the immortal lines from "As You Like It". See this pastoral comedy for yourself in an open air setting, Monday to Saturday, to March 8 each evening starting at 8.00pm in the Old Arts Quadrangle of the University, beside the Post Office. Bring a cushion, bring a friend. Bookings 390-789, Ext 862.

LIMBS DANCE COMPANY presents "Melting Moments" for a week at the Maidment Theatre, February 25 to March 2 each night at 8.00pm. In support will be the Auckland Philharmonic Orchestra. The programme consists of original dance works from over 150 selections. Limbs also performs at 1.00pm on Monday March 3 at the Maidment with a special free student concert, and kindly repeats the Student Arts Council sponsored events on Tuesday, March 4 at ATI Campus main hall, at Akoranga Drive, at 12.15pm.



THE HUMANIMALS, Richard von Sturmer and Charlotte Wrightson, are travelling the length of New Zealand. Their work has been described as "Dizzling" (Melbourne Fringe Network), "Compelling" (Christchurch Evening Post), "Intriguing" (Waikato Times), and "Provocative" (N.Z. Times).

During the last two and a half years they have been evolving a unique performance style which centres around the relating of stories and myths. These original stories are told using a variety of media including film, slides, mask, movement and percussion.

"We see no distinction between performance as entertainment and performance as exploration, a throwing of light onto areas that are often hidden or neglected." - The Humanimals. Little Theatre, Friday 28 February - Sunday 2 March, 7.30pm. Phone 390-789 ex 817 for bookings.

### TWO WHITE EYES and THE GLOW GLOBS

Shadows - Cover charge for non-cardholders. Friday February 28th 8pm

Two white eyes have developed a reputation amongst the alternative music following in Hamilton. A non-commercial and original sound.

The Glow Globes are also from Hamilton. They have a raw and energetic sound and a commitment to their music.

### WHERE IS THEATRE GOING? (Practical)

Wendy Blaxland, BA (First Class Honours), Dip Ed, ATCL (London). Friday 18 April, 7-9pm Saturday 19 April, 9.30am-4.30pm. Drama Studio, Entrance Door 326, 3rd Floor Concourse, Arts 1 Bldg, 14A Symonds St. Fee \$20.00. Limited to 30 participants.

Theatre needs to be explored practically as well as verbally. This weekend workshop is a practical extension of the ideas discussed in the seminar course 'Where is theatre going?' It will apply the different theatre techniques of Stanislavski, Brecht, Peter Brook and others to excerpts from appropriate playtexts. No acting experience or talent is required, just a readiness to try ideas in practice.

### SUMMER SHAKESPEARE

Old Arts Quad - \$6.00 Students and unwaged \$8.00 waged. Saturday February 16th to Saturday March 8th, 8pm. 'All the world's a stage and all the men and women merely players.'

Auckland University has a 25 year tradition of putting on Shakespearian plays in the Old Arts Quad below the Clocktower. This year you can see 'AS YOU LIKE IT' with the historical backdrop of the Old Arts building. Romance, comedy, adventure and music under the stars. Mulled wine and other scrumptious refreshments will be available, so bring a cushion and some friends.



### SHADOWS HOURS

Mondays - Thursdays 4pm to 10pm. Fridays 12 noon to 2pm. 4pm to 11pm. (\$1.00 cover charge)

1st Monday of the Month 4pm to 7.30pm. 8pm to 10pm (Women only). Every Tuesday, Happy Hour 6pm to 7pm half price on draught beer and wine!

Admission to Students with Uni I.D. and two accompanied guests.

THE LAST & FIRST CAFÉ presents Paintings by MICHAEL SMITHER - to March 3.

## MOVIES

CHARLIE GRAY'S CAPITOL THEATRES, 612 Dominion Road, Ph 602-599 this week a Jacques Tati season starts - Monday-Thursday, Jour de Fete at 8.30pm. Friday and Saturday, Mr Hulot's Holiday, at 6.00 and 8.30pm. Special late show on Sat 11.30pm is Warhol's Frankenstein 3 D, while at 5.00 and 7.30pm Merry Christmas Mr Lawrence screens.

City side at the ACADEMY has the classic - Anna Pavlova in English language and every 2nd Sunday sees the repeat screenings of Pink Floyd's The Wall or The Blues Brothers. Academy cinema downunder in the Auckland Public Library Building Lorne St. Phone 732-761.

SELECTED MOVIES ON AT PRESENT include the following: Prizzi's Honour, Kathleen Turner and Jack Nicholson tango with the Mafia under the direction of maestro John Huston, at Mid City. The colgate kids, Matt Dillon, and Debbie Byrne both star in Rebel, a hot hitter with a rebel turned into a hero! From the play, "No Names - No Packdrill", Mid City.

Brazil, is back for a re-run. It's academy awards time of course. A time tripper for the Orwellian '80's and the cult-figures of today, with Rob de Niro, Kath Helmond and Ian Holm starring. Recommended after enrolment queues.

Starting soon is Kiss Of The Spider Woman, a cult movie (feature next issue) starring William Hurt and Raul Julia.

Call into Uni. Bookshop late Feb., for lucky discount vouchers daily.

### ANGEL

(Ireland, 1982) Director: Neil Jordan. ANGEL is the first completely Irish feature in some years, and it is a surprising study of violence and revenge. Itinerant saxophonist Danny - "the Stan Getz of South Armagh" - witnesses a sectarian murder outside the dance hall in Northern Ireland where he just played. He then sets out to track down the killers himself on his own crusade for vengeance. Although director Neil Jordan an award-winning Irish novelist and playwright, does not deal directly with the politics or sociology of the Irish "troubles", he creates the emotional landscape of his native country in haunting and disturbing cinematic language.

Auckland Film Society (members only) - Auckland City Art Gallery. Wed 26 Feb, 5.30pm and 8pm. Ph 790-416, Box 5618, Auckland 1.

### AUCKLAND FILM SOCIETY

Note: Only members will be admitted to films. Members are required by law to be 18 years or over. All films are subject to censorship.

### MEMBERSHIP

To join the Auckland Film Society, simply turn up to one of our screenings, or fill in the enclosed form. For further information, write to PO Box 5618, Auckland, or phone 790-416. Rates: Single \$42; Deposit \$24. Reduced \$30; Deposit \$17. Couple \$76; Deposit \$42.





## LIVE MUSIC '86

A vintage year for the concert goer...  
\* LEADING CHAMBER MUSICIANS  
FROM NEW ZEALAND AND  
THE WORLD:

Academy Piano Trio  
Vienna Musikverein Quartet  
Cambridge University Chamber  
Sirocco  
Diedre Irons  
Michael Houstoun

SPECIAL STUDENT RATE  
8 Concerts \$4.69  
Door Sales \$7.50  
MUSIC FEDERATION  
P.O. BOX 2230  
AUCKLAND  
Ph 478-6913

## Auckland Philharmonia Orchestra

### 1986 MASTERWORKS TO FEATURE BEETHOVEN AND MOZART

### 1986 MASTERWORKS TO FEATURE BEETHOVEN AND MOZART

Aucklanders can look forward to a  
feast of Beethoven and Mozart in the  
Auckland Philharmonia Orchestra's  
1986 Masterworks Series.

The series, will comprise five major  
concerts, featuring separate  
programmes devoted to the music of  
Beethoven and Mozart, as well as the  
music of Scandinavia, Vienna and  
America.

Highlights of the series will include  
Michael Houstoun as a soloist with  
conductor Erich Bergel in the all-  
Beethoven programme and Houstoun  
as conductor-soloist in the all-Mozart  
programme. Both programmes will  
also be performed at the New Zealand  
International Festival of the Arts in  
Wellington next March.

Soprano Nicola Ferner-Waite and  
conductor Donald Johanos will also  
feature in a performance of Mahler's  
Fourth Symphony.

The Orchestra's principal conductor,  
John Hopkins, will direct the  
Scandinavian programme with  
Viennese violinist Karin Adam as  
soloist, while the American repertoire  
programme will be under regular guest  
conductor Donald Thulean, who will  
join Paris-based New Zealand pianist  
Jeffrey Grice in a performance of  
Gershwin's Concerto in F.

### MOVING FORWARD - LOOKING BACKWARD

It seems to have now struck home to  
many in the music industry that  
enough music has been written to last  
until the end of the present human  
manifestation. Given the cyclical  
nature of fashion trends and the ever-  
popular update versions of old hits,  
obviously 20 year cycles of youth  
anthem music, suitably revamped,  
should suffice to keep the present  
playlist-structured industry going  
forever.

Led Zeppelin rules again, Jimi  
Hendrix is god, The Doors etc etc and  
it is good that this classic music is still  
appreciated. But these are new and  
strange times: surely new musical  
directions are needed to capture the  
needs of today, unless we are to hide  
from reality in the nostalgia of the past.

Using the unprecedented  
performance power of data-powered  
hi-tech instruments, so much is  
possible, and it is encouraging to see  
amongst the mass of gimmick-  
exploitation producer non-music a  
trend towards meaningful poetry/lyrics  
full of social relevance together with  
music power never before available, as  
evident in the growing success of new  
acts such as David Eggleton. God  
Defend New Zealand!

SCHOOL OF MUSIC  
LUNCHTIME CONCERT SERIES  
MAIDMENT THEATRE 1.05pm  
Series starts - Friday, 7 March and  
continues EVERY Friday during term.  
FREE!

SING!  
with the UNIVERSITY CHOIRS  
University Choral Society - Open to  
any member of the University. Rehear-  
sals: 1-2pm, Mondays and Wednes-  
day during term. Venue: Upper Lecture  
Theatre (behind Clock Tower). First  
rehearsal - Monday, 3 March. See you  
there!

University Singers - Entry by audition.  
Upper age limit of 25. Rehearsals:  
Tuesday, 6-8pm; Thursday, 12-2pm.  
Auditions will be held in the last week of  
February in Room 15, School of Music.


All enquiries regarding choirs to  
Karen Grylls please - Ext. 7482.

AUNTY MAME  
100th production birthday special for  
Onehunga's DOLPHIN theatre is  
"Aunt Mame". From the Broadway  
stage show. Ph theatre 667-322.

# MUSIC live in '86



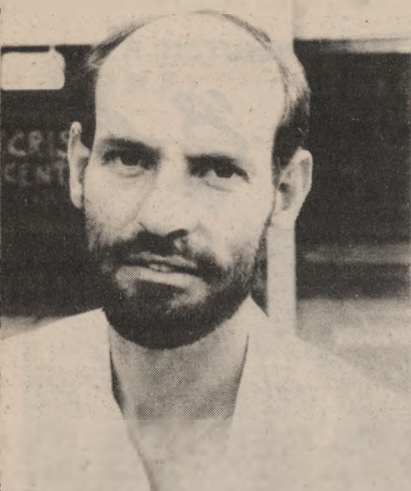
Judy A	Judy A	Graveyard Mark T	Judy A	Graveyard Mark T
Lisa	Megan	Jazz	Mark	Silly Show
Paul	Paul	Blues	Joe Nathan	Jazz
Debbie	Lisa	Womens Show	Lisa	Womens Show
Robert	Andrew	Polynesian Show	All Sorts	Polynesian Show
Joe Nathan	Jackie	Reggae Industrial	Robert	Reggae Classical Metal

Auckland Philharmonia Orchestra 1986 Season. All concerts in the Town Hall commencing at 8.00pm.		DATE
 <p>HOPKINS The Auckland Philharmonia Orchestra's internationally acclaimed principal conductor.</p>	Erich Bergel Conducting - Michael Houstoun, Pianist Beethoven: Egmont Overture Piano Concerto No. 3 in c minor Symphony No. 4 in B Flat	Thursday March 6
	A MASTERWORKS CONCERT SPONSORED BY CALTEX OIL N.Z. LTD Michael Houstoun, Conductor and Pianist Mozart: Symphony No. 31 in D, Paris Piano Concerto No. 17 in G Serenata Notturna Symphony No. 36 in C, Linz A MASTERWORKS CONCERT SPONSORED BY CALTEX OIL N.Z. LTD	Thursday March 13
	Erich Bergel Conducting - Christiaan Bor, Violinist Schubert: Symphony No. 8 in b minor, Unfinished Bruch: Scottish Fantasy Franck: Symphony in d minor A FAY, RICHWHITE CELEBRITY CONCERT	Wednesday March 19
		Sunday 16 February
		Through Week
		Sunday 23 February
		Through Week
		Sunday March 2



# EDITORS VIEW

Time for a cool, clear, change



"Lots of those friendly people showing me the way to go I never want to lose their friendly feelings I know its time for a cool change ....

Glen Shorrock  
former lead singer - Little River Band

A trite sounding, literature title?

Yes. Not only has the calendar year changed but so have another change of people to this University.

Along have come new ideas, expressions and with them, experiences. Another clear change has come to the newspaper, "CRACCUM", and I'm sure you'll see and experience many more this year.

Now in the paper's sixtieth year, comes the change with the first ever elected Editor to look after its fortunes.

Restructuring change for "CRACCUM" has come, and like the words penned above, lots of people have been showing me the way to go.

We are all here travelling on a journey, both collectively and individually, and along the way I sincerely hope you will enjoy the cool, clear, changes to "CRACCUM" as we traverse along the journey together. It is time for a cool, clear change. Welcome along.

*Peter* Peter Boys

## hieroglyphics

### RUSSIAN SPIES

Dear Sir,

As a patriotic Mainlander (or South Islander, as you Northerners call us), I was most inspired by the recent gallant guerilla action by the South Island Home-Rule Association in its struggle for foreign interference. I refer of course to the bombing and sinking of the Russian spy ship in the Marlborough Sounds.

Such actions by our military wing are rare these days, and will doubtless attract little media coverage abroad due to the low death toll. But this is exactly the point. We Mainlanders are magnanimous, gentle, and respectful of human life, and unlike foreign revolutionary struggles where it always seems that a high score in the death-toll stakes is the main criterion, our sisters and brothers were content to not only sink the spy ship (inside our territorial waters moreover) but to do so in such a way that the spies and other passengers could escape unharmed. I understand that the Central Committee of the Home-Rule Association has issued a statement of condolence on the accidental death of the one actual casualty, the Russian KGB commander who accidentally suffered brain occlusion during interrogation.

Other patriotic revolutionary movements in the planet should learn from the South Island struggle for freedom. We have cost the KGB (who are now clearly shown to be working hand-in-glove with the North Island régime and the S.I.S.) many millions of roubles, and yet all our fighters escaped unharmed! Let the cringing North Island régime and their Russian and American lackeys take warning! Tremble when you carry out your dastardly spying missions against the happy peace-loving South Island people! Cease all economic and political exploitation of the glorious South! Home Rule now!

Yours patriotically,  
PROUD SOUTHERNER

### WHAT ABOUT THE SWISS A/C?

To The Editor,  
Craccum,

Dear Peter,

You come to your position at a time of great trouble, the tiddlywinks society is on the verge of winding up. I have written to Ronald Reagan to ask for a loan of his nuclear umbrella, and I have asked Maggie Thatcher to send us a used cabinet minister, but this will not suffice. Without active members, and an energetic committee the society is doomed. This is terrible; I mean I know we're not as old as the tramping club, but we are only 85 yrs from our centenary!! and about to be cut off in our prime.

Could I request you to use the good offices of our newspaper to spread the word. Our first games evening of the year is to be held in the top common room on Monday 10th of March at 7.00pm., and whether the society continues depends largely on how many enthusiastic games players turn up ....

Thanks,  
Marion Adams B.A. (almost)

### FOOD FOR THOUGHT

Dear Peter,

We are lucky aren't we here in Godzone, for we have full bellies and can afford irrelevant luxuries such as: Boats, Cars, Movies, Fashion, TV, Schools, Politeness, Self-control, Armed Forces, Libraries, Musical Instruments, Computers, Debates, Sport, Lotteries, Horse-Racing, Dentists, Opticians, Egyptologists, Psychiatrists, Audiologists, Lawyers, and Sex.

In fact it would seem that the entire difference between a simple or a complicated life is determined by that one item, Food. Maybe a little too much.

Yours sincerely,  
Kai Baby Kai

### PRESIDENT'S COLUMN ELEMENTARY SAYS WATSON

'There never was a good war or a bad peace.' Benjamin Franklin.

Many people think University means school on a higher scale, but when the Editor asked me for a 10,000 essay on what I did over the summer break, I had to draw the line. I decided to write a significantly smaller President's column instead.

Hopefully 1986 will see more students become involved in their Student Association.

In 1985 a dramatic increase in the student meetings, forums and student elections occurred. We also had many more social events and nearly a two-fold increase in patronage in the student bar - SHADOWS. All students are forced by law to belong to the Student Union, so the best bet is to overcome apathy and to take advantage of this membership whether or not individuals support the principle of a compulsory Student Union. This can not be got around.

The 1st term 1986 will include a promotion of the Student Union making members fully aware of facilities and services available. Despite current opposition with some of my Executive to the democratic process I feel I will be able to persuade these people to take a more positive outlook.

In the past the cruel result of democracy has often hurt these radicals, but this gives no reason to avoid reaching out to students for their opinions; after all we are a Student Union! Those who fear democracy and thus try and enforce their views and get their people into positions through other means, deserves no praise.

This fear I hope to effect even more positive changes than in 1985, and feel the amount of personal attacks in student politics will decrease, given Craccum's new policy of keeping a close eye on AUSA's happenings. People don't volunteer to look like fools.

Have fun at Orientation; sorry about Enrolment queues, and remember... get involved in your Student Union, especially the democratic process.

Yours,

*Graham*

Graham

## HORRORSCOPE

### ARIES

A promising partnership starts from a casual friendship. Danger, unlike you to forget an appointment. Be prompt to future meetings.

### TAURUS

Allright you overspent in the weekend, go easy at Shadows - try the light stuff for a refreshing change.

### GEMINI

You are thoroughly fed up with lifes daily hassles. Take in a movie or some form of light entertainment, or hit the sack early.

### CANCER

Give free rein to your intellectual curiosity, after all you've come to the right place! UBS could be your lunch time hangout?

### LEO

Life is never straightforward these humid days. You are here but the beach beckons. Alterior motives and wishful thinking are out for this term.

### VIRGO

About time you have a complete medical check - isn't it? Plan to listen to the National program or the BBC news. That should do the trick.

### LIBRA

The balancing act is wearing thin. Stand up for your rights and speak your mind, perhaps at forum on Tuesdays in the Quad.

### SCORPIO

Money is most on your mind as you watch the money hard earned flow through your fingers. About time you learnt to budget anyway.

### SAGITTARIUS

Hard work and more dedication this year will carry you up the success ladder. Keep your toll calls brief and to the point.

### CAPRICORN

You are restless to get on with the study, so pretend all is calm even though you secretly envious of someone you vaguely know here.

### AQUARIUS

Get yourself a pet - goldfish or Great Dane. Repay a friends favour as soon as you can, and don't forget to book tickets for the weekend.

### PISCES

Always last, that's usual for you, but don't despair - what's new? Put some pleasurable music on tonight and drift away with your dreams.

## ROYAL HOROSCOPE

Mrs Elizabeth Q. Windsor: You are about to undertake an arduous journey in a strange land. Tread warily, for your indiscretions and flaunting of your wealth may cause offence.

### CREDITS: CRACCUM FEB 24 ISSUE

To those who voted for a change and want a fair and responsible Editor

With sincere thanks to those people who came and worked to produce this issue 'against all odds' and who have shared the battles of Princes Street too.

To Sally for her loyal support. Thanks.

Thanks to Colin, Leonie, Gerald, Leighton, Sally, Mike, Pilar, Rachael, Bruce, Gray, Richard, Debbie, Michael, Louise, Melanie, Paul, Mark, Greig, and Colonel Gadafi. Also, in memory of 'Battler Beverley' who has given hope and inspiration.

The Elected:  
Editor  
Peter Boys

The Selected:  
Advertising Manager  
Paul Gourlie

Photography:  
Mike Webber  
Jane Falloon

Acting Technical Editor:  
Sally Smith

Typesetter:  
Barbara Hendry

Distribution Manager:  
Richard Steele

CRACCUM ... A Disneyland Production.



# NGA TAUIRA MAORI

NGA TAUIRA MAORI  
(MAORI STUDENTS)



Kia ora aro taatou; roto; tenei ao hou. Tena koutou; i roto; o tatou tini aitua, kua hinga te motu; te kaainga hoki.

NGA TAUIRA HOU (FIRST YEAR MAORI STUDENTS)

A special welcome to all those who are enrolling at Auckland University for the first time. Hope you have all had a break and are all looking forward to the year ahead.

To all those who have travelled from the country and from outside the Tamaki area a very special welcome.

Please feel free to come up to Room 237 (especially during enrolment week). Room 237 is the interim marae until our marae in Wynyard Road is completed. Most of our archives on campus are carried out here. You will find Room 237 on the second floor, student union building. (The top floor above the student noticeboards in student union, next to Custodians office).

If you would like to meet other Maori students to discuss timetables, courses, textbooks, facilities available, finances, etc, or if you just want to rest your feet, come on up. There will be students to help or talk to.

NO REIRA, NAU MAI PIKI MAI KAKE MAI HAERE MAI

## RETURNING STUDENTS:

The Christmas break normally provides an excellent opportunity for some of us to make it home. To those who did not make it home for various reasons we have a lot to talk about and catch up on.

Congratulations to those who passed their papers. Hard work and third term swot for others paid off. To those who did not pass let's get stuck in this year.

## REGISTRATION

Please make sure that all of you have registered with Nga Tauira Maori this year. You can register at the Maori Students desk or in Room 237 during enrolment.

RAEWYN TIERNEY AND PERCY ROBINSON MSO.

NGA TAUIRA MAORI (MAORI STUDENTS)

Most of these members can be contacted at Interim Marae, Room 237.

Tumuaki Maori: Patake Winiata  
(National Officer) Poneke

Maori Student Officers (Taamaki) Te Aniwa Tutara  
Ngaati-Whaatua  
Percy Robinson  
Ngaati - Porou

Co-ordinator: Karina Williams  
Tuhoe

Treasurers: Therese Mangos  
Kirihi  
Wiremu Solomon  
Ngaapuhi

Tutor: Marie Foster  
Tainu

Kaumaatua: Whare Toroa Kerr  
Tainu  
Waiora (8th Floor,  
Maori Studies  
Dept)  
(Maori Studies  
Lecturer)

Maori and Polynesian Advisor Shirley Potaka  
Ngaati - Whatua  
(Office in Choral Hall)

PANUI

Thursday 20th Feb

PANUI

Thursday 20th Feb - Friday 28th Feb  
Enrolment Week (Room 237 open  
8.30am - 9.00pm)

Monday 3rd March 6pm Drinks at  
'Kiwi' pub.

Tues 4th March 12pm - 2pm Stall  
in quad.

Wed 5th March 6pm. Drinks at  
'Kiwi' pub.

Fri 7th March 1pm - 2pm Sport  
at Recreation  
Centre (Don't forget your gear!)  
6pm Pohiri for new students  
continuing into social evening.

Mon 10th March 1pm - 2pm Videos  
in Room 237.  
8pm 'Aotearoa' band in Cafe.  
\$3 cardholders, 16 non cardholders.

Wed 12th March 12pm - 2pm Stall  
in quad.

Fri 14th March 12pm - 2pm Marae  
visit.  
Assemble in Room 237.

# MENSPACE



Not many men keep all their conkers from their schooldays.

## RAPE

I have been raped. A lot of people have raped. I'm not talking about dragging someone off the street and physically forcing sex. I'm talking about the form of rape that occurs within a relationship, with other types of power existing. Can you deny that power exists unevenly within your relationship? So how did I rape? I was in a relationship with a woman for whom I cared a great deal. I considered sex to be the closest form of caring that could occur in a relationship. My own insecurities and in part my upbringing created a need in me for love/attention/caring.

From this point I defined the relationship and I assumed my partner shared or should share the same definition. As you can see this is not in effect actually caring for the other person at all. A mistake is to treat your partner as an extension of yourself. So consciously and unconsciously I thought this person should love me the way I was supposed to be loved, which meant sex, which meant comforting my insecurities and living up to an expected role model. This individual perceived things differently and was inevitably resistant. The next step is pressure to the individual in the form of threats to the relationship, demanding the individual prove their 'love' according to my definition of love and playing on the sympathies of the person by being hurt at not being 'loved'.

Where the person yielded to sex on the basis of any of those or other pressures rape occurred. Now I don't think that what I have described is substantially different to the experiences of a lot of people. If you can identify with any of the above then you, like myself are a rapist? I don't think you do, I know now that I certainly don't. So it is up to you and me to ensure it doesn't occur again.

Understand that the other person is not the same as you and has different emotions and responses - after all isn't that why you originally chose them. Understand that the other person has personal autonomy and should not be in the position of having to react, but rather acting according to what they freely choose to believe and feel. No is

not generally a rejection, and respect for the others decision will mean respect in turn for yourself. Don't try to justify yourself, there is no justification in oppression. Your feelings may be genuine, you may not realise you are harming the other person but you are. Place yourself in the position of your partner and view what is happening from their perspective. Analyse your definition of love and ask yourself why it must be expressed in terms of sex when you need it. If your definition still holds and your partner disagrees, which from what I've heard and read is common for a lot of people, then don't pressure that person by being hurt etc, either accept the situation or leave it. Have the decency not to make it an either sex or no relationship situation as the other person out of caring for you and perhaps their own insecurity will possibly yield to save the relationship. Can they really choose freely in that sort of situation? Unfortunately if you feel that strongly that sex and love are the way you have defined it, you will have to be cruel to be kind. I mean is there a future to a relationship where the basic premise of what love is, is different for you both?

Finally as is obvious rape as a concept doesn't only occur sexually. Rape occurs in any situation where an individual is made to do something which they would otherwise not do if they had an unhindered choice. An unhindered choice occurs when they have the power to make that choice, and another person does not have the power to alter it. Look at what power you have over others and the way you exert it. No person should be anybody's physical, emotional or economic slave. Let's not make them.

N.I.T.S.

Wednesday 26th February: FORUM FOR MEN  
at 'Outreach' Community Centre,  
1 Ponsonby Road, NEWTON, starts 7.30pm.

A chance for men to talk about our involvement in sexism and how we can work together to change ourselves and other men.

For further information contact, Men Against Rape, PO Box 39-033, Auckland West. Ben Hayman, ☎ 396-378 or Jon Barker, ☎ 763-997 (evenings) or Brian Latimer, ☎ 788-090 (evenings).



"I'll ask him about the mineral rights in a minute."



# BURSARY BACK-STOP

## We'll back you up this year.

Six good reasons why Bursary Back-Stop will help your tertiary bursary go a lot further in 1986.

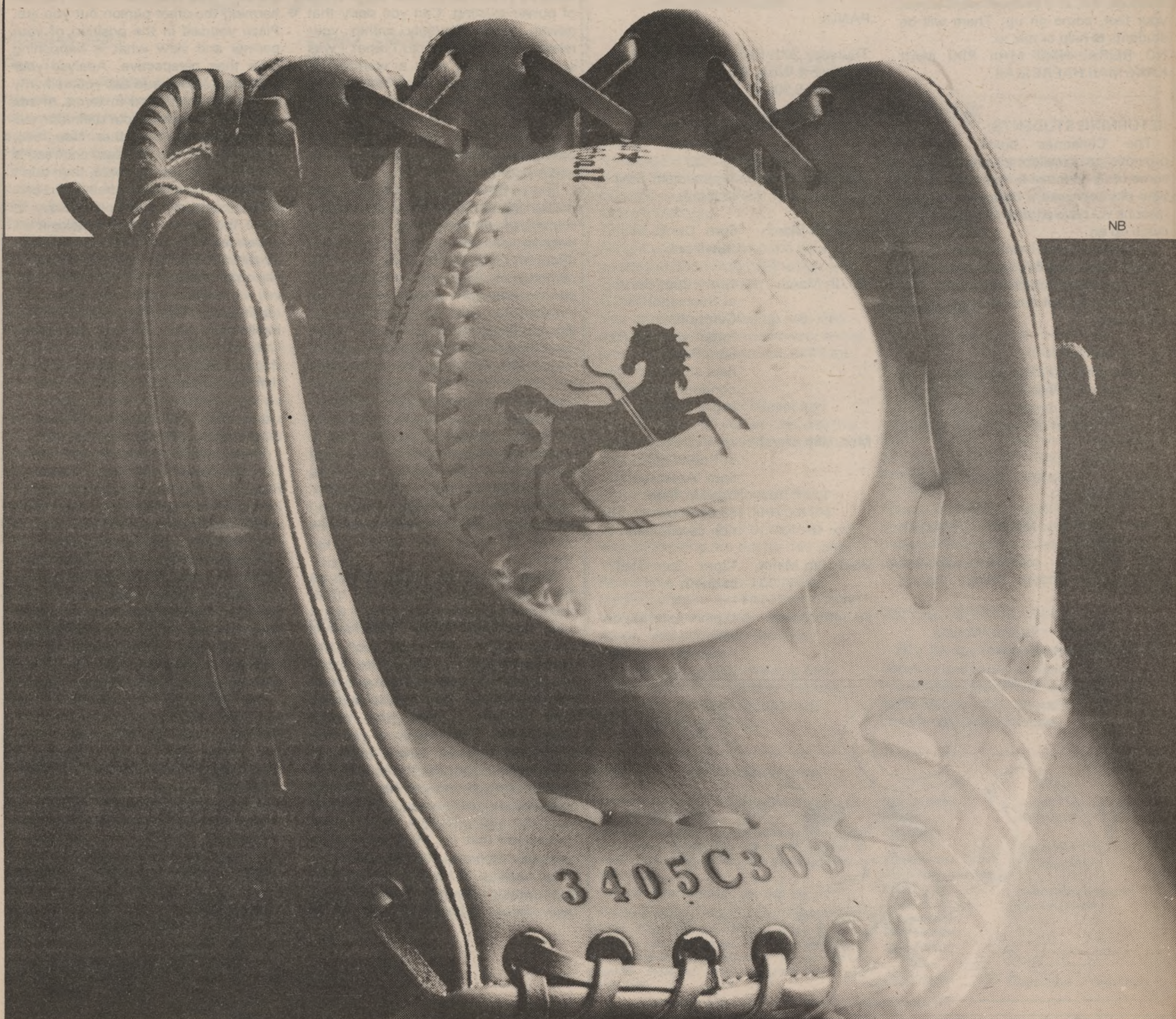
1. Free ISIC student travel card — half price domestic air travel. 2. Free cheque account. 3. Interest free \$300 bursary advance. 4. Free automatic payments. 5. Mastercare Life Insurance — first premium free. 6. Free Cashpoint card. And you may also qualify for — VISA, and concessionary student loans.

Call into your nearest National Bank branch. See how Bursary Back-Stop can be adapted to suit your individual requirements.

**The  
National  
Bank**  
of New Zealand Limited



Although unsecured, deposits with The National Bank are an authorised trustee investment.





# Orientalism '86



University Bookshops  
Complimentary  
Orientation Programme



## SUNDAY FEBRUARY 16

10am to 5pm  
QUAD

### "MAZE DAZE PARTY"

Come build a maze, paint a maze.  
Refreshments available. Thanks to the  
National Bank.

## MONDAY FEBRUARY 17

2am to 5am  
DAILY

### CAMPUS RADIO

Campus Radio begins broadcasting for  
the first time in to 91.8 FM from 7am to  
11pm. Listen daily for ORIENTATION  
RESULTS.

11am & 3pm  
RM 144

National Bank's "Stage 1" Video  
screens answering your Questions about  
University during Enrolment.

8pm DAILY  
OAQ

### SUMMER SHAKESPEARE

"AS YOU LIKE IT". A Romantic  
Evening under the stars.

\$8 waged

\$6 unwaged

## THURSDAY FEBRUARY 20

8pm

OAQ

Enrolment Madness Begins. Buy your  
Card Quick before you get lost  
in the Maze.

### SUMMER SHAKESPEARE

"As You Like It"

## FRIDAY FEBRUARY 21

1pm to 2pm  
Sci Con

### "STILT THEATRE"

Amazing Stilt Theatre Performance.

12pm to 2pm  
AOTEA SQ.

Pips Theme Concert  
Brass and Pipe Music in Town.

8pm to 12pm  
Cafe

ATI Masked Dance  
With Missing Lynx and Red Adair.

Orientation Cardholders \$3

Non-Cardholders \$5

### SUMMER SHAKESPEARE

"As You Like It"

## SUNDAY FEBRUARY 23

11am to 4pm  
Domain

ASB Pips "TEDDY BEARS PICNIC"  
Prizes for Best-Dressed Red Cross  
Teddy, Smallest Teddy, and Largest  
Teddy.

## MONDAY FEBRUARY 24

8pm

OAQ

SHADOWS BAR Opens for the year  
MON-THURS 4pm to 10pm,  
FRI 12am to 2pm, 4pm to 11pm.

### SUMMER SHAKESPEARE

"As You Like It"

## TUESDAY FEBRUARY 25

8pm

Maid

### LIMBS "MELTING MOMENTS" opens.

A programme of Limbs' major  
classic works.

Students \$8.50

Public \$14.50

8pm

OAQ

### SUMMER SHAKESPEARE

"As You Like It"

## WEDNESDAY FEBRUARY 26

1pm to 2pm  
NAQ

### "STILT THEATRE"

8pm

Maid

### LIMBS "MELTING MOMENTS"

Special Price Night only \$6 to students.

8pm

OAQ

### SUMMER SHAKESPEARE

"As You Like It"

## THURSDAY FEBRUARY 27

2pm to 5pm  
Ponsonby

"ASB PIPS Community Showcase"  
Pips Games Team and Stilt Theatre in  
action in Vermont Reserve. Vermont St.

8pm

Maid

### LIMBS "MELTING MOMENTS"

Students \$8.50

Public \$14.50

8pm

OAQ

### SUMMER SHAKESPEARE

"As You Like It"

## FRIDAY FEBRUARY 28

1pm to 2pm  
Quad

### HUMANIMALS

Can you Find a Zebra in the Maze?

12pm to 2pm

Aotea Sq.

Pips "Blast from the Past"  
Concert.

7.30pm  
LT

### HUMANIMALS

Animals Live in Theatres too.

Cardholders \$2

Non-Cardholders \$3

Public \$5

8pm

Maid

### LIMBS "MELTING MOMENTS"

Students \$8.50

Public \$14.50

8pm

Cafe

### "HERBS CONCERT"

With Auhurangi. Break out of the Maze  
and Rage.

Cardholders \$4

Non-Cardholders \$6

8pm

Shadows

Hamiltonian Bands "Two White Eyes"  
and "The Glow Globes" hit Shadows.

Cover Charge.

8pm

OAQ

### SUMMER SHAKESPEARE

"As You Like It"

PLEASE BRING YOUR STUDENT I.D. TO ALL FUNCTIONS ...  
ONE I.D. BETWEEN TWO PEOPLE IS NECESSARY FOR ENTRY.

## LIFE IN THE MAZE

Lost in the Labyrinth of campus life?

University is designed to disorientate you mentally and

physically. Can you find the accommodation office?

What is SRC? When does the cafe shut? Is B26

a lecture theatre or a cupboard?

Orientation '86 is a guide to orientate you mentally  
and physically through the first weeks of varsity life.  
If you have any questions come and ask one of our  
team either in the LCR or the MAZE office in the quad.

## INFORMATION FOR CARDHOLDERS

An Orientation '86 cardholder a  
discount on all major orientation events. Pr  
will be essential for majors as venue  
limited, cardholders must early to be  
admission. To receive the card r  
presented, I.D. will have shown if de  
card selling booth will be in the M  
the quad from 10am to 5pm can be  
also. Cards are also on sale enrolme  
the Lower Common Room will be wa  
maze sellers of cards during day. Cost  
is \$8, on sale from February

Thanks to all the AUSA SSAC, Cam  
PIPS and many sundry help

Also thanks to our many staff; The Un

## SATURDAY MARCH 1

7.30pm

LT

### HUMANIMALS

Cardholders \$2

Non-Cardholders \$3

Public \$5

8pm

### LIMBS "MELTING MOMENTS"

Students \$8.50

Public \$14.50

8pm

OAQ

### SUMMER SHAKESPEARE

"As You Like It"

## SUNDAY MARCH 2

7.30pm

LTD

### HUMANIMALS

Cardholders \$2

Non-Cardholders \$3

Public \$5

8pm

Maid

### LIMBS "MELTING MOMENTS"

Students \$8.50

Public \$14.50

9pm to 6am

RG

### ALL NIGHT Rudman Gardens MOVIES

Thanks to the National Bank.

Cujo

Attack of the Killer Tomato Plants

Liquid Sky

Pottergeist

American Werewolf in London

Then why not have a Cafe Breakfast

at 7am.

## MONDAY MARCH 3

1pm

RG

### KICK-OFF CONCERT in Rudman

Gardens featuring THE DOLPHINS and

MEG AND THE FONES. Kai and

Refreshments available.

Our thanks to the BNZ.

Political Space

1pm

LT

Disabled Students Introduction Evening.

Video to be shown. Refreshments and

food available.

5pm

Cafe

### National Bank NZ FILM FESTIVAL

In Spring One Plants Alone

State of Siege

8pm

Maid

### Vigil

Cardholders \$1

Non-Cardholders \$3

6pm

LT

Don McGlashin and Harry Sinclair of

Songs and Stories on the Front Lawn

fame.

Cardholders \$3

Students \$4

Public \$6

Thanks to BNZ.

6pm

Coun

### QUEER PICTURES Opening Party.

Exhibition of lesbian and gay artists.

6pm

RM 144

Auckland University Science Fiction

and Discordian Club Games. Evening.

8pm

Shadows

### DAVID EGGLETON and THE "O" TEAM

"God Save NZ". Cover Charge.

Thanks to BNZ.

8pm

OAQ

### SUMMER SHAKESPEARE

"As You Like It"

## TUESDAY MARCH 4

9am to 5pm

Coun

### CENSUS DAY AUSA declares

INDEPENDENCE from NZ.

### QUEER PICTURES

10.30am

### "SAVE THE GRAPE TOUR" Bus tour

of vineyards Leaves from Quad.

1pm

LT

Political Space

1pm to 2pm

Maid

### LIMBS Lunchtime Concert.

Free with Card

\$2 without Card

Thanks to United Building Soc.

12pm to 3pm

RM 144

### Meet The Christian Club

1pm to 2pm

SMOF meeting somewhere in the

near cosmos.

Introduction to Evangelical Union.

1pm

LLI

### NZ FILM FESTIVAL

Smash Palace

Thanks to the National Bank.

6pm

LT

Don McGlashin and Harry Sinclair.

Thanks to the BNZ.

8pm

OAQ

### SUMMER SHAKESPEARE

"As You Like It"

8pm to 12.30am

Shadows

### CENSUS PARTY featuring

T. K. A. and the Eric Glandy

Memorial Band. Cover Charge.

Thanks to the BNZ.

## WEDNESDAY MARCH 5

7am to 9am

Shadows

### CAMPUS RADIO OPEN DAY

Find your way around the airwaves.

9am to 5pm

Coun

### BUBBLY BREKKIE

12pm

BBQ

### QUEER PICTURES

1pm

LT

The Famous Five Lawn Party

fun by EU.

1pm

LT

Political Space

1pm

Quad

### Student Rep Council

ARA takeover of Student Politics

1.15pm

Quad

### RUN THE MAZE. Fun Run Treasure

Hunt with Neat Prizes.

6pm



**FOR CARDHOLDERS**  
6 card holder a substantial  
major events. Pre-booking  
for major as venue size is  
ers must early to be guaranteed  
ceive dis the card must be  
will have shown if demanded. A  
1 will be in the MAZE situated in  
am to 5ants can be booked here  
Iso on the enrolment desk in  
on Room will be wandering  
ards during day. Cost of the card  
m February  
AUSA SSAC, Campus Radio,  
ndry he  
ir many is; The University

Bookshop, National Bank, Bank of New Zealand, ASB,  
and United.

**T-SHIRTS**

Orientation '86 T-Shirts are being sold in the MAZE  
office or in RM 202 in the Student Union Building.  
Chinese Style \$12. Normal \$8. Thanks to ASB.

THE ORIENTATION COLLECTIVE (Who brought you all this) is:  
Kerry Hoole, Liz Lovell-Smith, Pat Stodart, Kirsten Collins,  
Jill Seggadin and all sundry helpers.

The Orientation Collective will be wearing orientation  
T-Shirts with Orientation Controller on them. We can be  
asked practically anything about everything. Their main  
office is situated in RM 202 on the top floor of SUB,  
and it's here you bring your problems.

5pm Archaeological Society BBQ  
HSQ  
6pm  
LT  
6pm  
Col Lge  
8pm  
OAO  
8pm  
Shadows  
8pm  
Cafe  
air.  
3.30pm  
Sci Con

DON MCGLASHIN AND HARRY SINCLAIR  
Thanks to the BNZ.  
Discordian Quiz Night.  
SUMMER SHAKESPEARE  
"As You Like It"  
Cover Charge.  
Thanks to the BNZ  
FINDING THE RAGE  
WOMEN'S BERRY FEELINGS and  
LOOK BLUE GO PURPLE  
Cardholders \$4  
Non-Cardholders \$6  
EU Walk in Movie

**FRIDAY MARCH 7**  
pm  
luad  
pm  
laid  
pm to 2pm  
T  
pm to 2pm  
ec Cen  
pm  
15  
pm  
aid  
xm  
aid  
im  
adows  
m  
237  
m  
3R  
m  
ves.  
ure  
ir.

ARA "Very Silly Games"  
Musical School Concert.  
"Fridays at One"  
PUPPET THEATRE from Australia.  
MAORI STUDENTS  
Volleyball etc.  
Women and the Bible, speaker  
Glenys Hampton C.C.S.I.G.  
NZ FILM FESTIVAL  
Jewl's Darl  
My First Suit  
Sylvia  
Thanks to the National Bank.  
Matthew Shirlcliffe — Stand-up Comic  
from ...  
Cover Charge includes "Heptocrats"  
POHIRI —  
Maori Students  
MAORI Students Social Evening  
Don McGlashin and Harry Sinclair  
Cardholders \$3  
Non-Cardholders \$4  
Public \$6  
Thanks to the BNZ.  
HEPTOCRATS  
Cover Charge.  
SUMMER SHAKESPEARE  
"AS YOU LIKE IT"

**TURDAY MARCH 8**  
Don McGlashin and Harry Sinclair.  
Thanks to BNZ  
Cardholders \$3  
Non-cardholders \$4  
Public \$6  
THE VERLAINES  
Cardholders \$4  
Non-Cardholders \$6

**DAY MARCH 9**  
Yoga Club in Cafe  
to 4pm  
1 St.  
Pips TROLLEY DABBY down

9pm to 6am  
RG  
Rudman CULT MOVIES  
Thanks to the National Bank  
Times Square  
Rocky Horror Picture Show  
2001  
Blues Brothers  
Fantasia

**MONDAY MARCH 10**

9am to 5pm  
Coun  
9am to 5pm  
Wome  
1pm  
LT  
1pm to 2pm  
RG  
1pm to 2pm  
RG  
1pm  
RG  
1pm  
Maid  
1pm  
B10  
6pm  
RM 144  
7pm to 11pm  
TCR  
8pm  
Shadows  
8pm  
Col Lge  
Queer Pictures  
"INTERNATIONAL WOMEN'S WORKING  
DAY" Come up to WOMENSPACE to  
Celebrate (Women only).  
Political Space  
PUTTY IN HER HAND  
Look out the Topp Twins?  
Maori Students Video  
Come up and enjoy a Video.  
"Giant Dune GAME"  
Bought to you by the Auckland  
Science Fiction Society  
Maidment Movie  
Commerce Major Day  
Advice and information on Commerce  
Courses  
Games Night AUSF's.  
Tiddlywinks and Knucklebones Society  
Games Evening.  
WOMINS NIGHT at Shadows  
featuring  
PUTTY IN HER HANDS  
MAHIA TOCKER  
THE DOLPHINS.  
Womin only. Cover Charge.  
Field Club Social Evening.

**TUESDAY MARCH 11**

9am to 5pm  
Coun  
9am to 5pm  
Quad  
1pm  
LTD  
1pm to 2pm  
RM 237  
12pm to 3pm  
RM 144  
1pm to 2pm  
Mart Arts  
1pm  
1pm  
B10  
6pm to 11pm  
Cof Lge  
7.30pm & 9pm  
Shadows  
8pm  
Exec L  
8pm  
Cafe  
8pm  
LT  
Queer Pictures  
Sports Clubs Day  
Political Space  
Maori Students Video.  
Christian Club Meeting.  
Akido Club Demonstration  
EU Faith  
Commerce Major Day  
AUSF Movie Evening  
"THUNDERBIRDS" Cabaret, Sature.  
Cover Charge.  
Labour Club Evening  
AOTEAROA "EXITING NEW ZEALAND  
MUSIC". Raging in the Cafe.  
Cardholders \$3  
Non Cardholders \$5  
A Play from Africa

**WEDNESDAY MARCH 12**

CLUDS AND SOCIETYS DAY  
Stalls in Quad  
Famous Five Lawn Party — EU  
12pm  
BBQ Area  
1pm  
Cafe Ext  
1pm  
B10  
1pm  
Quad  
7.30pm  
Shadows  
7.30pm  
LCR  
8pm  
Maid  
8pm  
LT  
S R C  
Commerce Major Day  
TTN Pub Run  
Meet in Quad.  
Cabaret. Satire.  
Cover Charge.  
ARA AGM  
And Slide Show  
Chase Dragons — An Urban Fantasy.  
An African Play

**THURSDAY MARCH 13**

1pm to 2pm  
Exec L  
1pm-2pm  
LT  
1pm  
MCC  
1pm  
Chapel  
6pm to 11pm  
TCR  
8pm  
Shadows  
8pm  
LT  
8pm  
Maid  
AIESEC  
Political Space — Amnesty  
International Meeting  
EU Orientation Service  
Orientation Service  
AUSF Discordians Wine and Cheese  
SKIN CRAFT  
Cover Charge.  
A Play From Africa.  
CHASE DRAGONS — An Urban Fantasy.  
Students \$3  
Public \$6

**FRIDAY MARCH 14**

12pm  
UNI MARAE  
1pm  
LT  
1pm  
Maid  
1pm  
5pm  
LCR  
8pm  
LT  
7.30pm  
Cafe Ext  
8pm  
Maid  
8pm  
Shadows  
MARAE TOUR  
Political Space  
Music School Concert  
Pacificism/War Debate EU  
GAY STUDENTS DANCE  
A Play From Africa.  
Classic Orgy  
CHASE DRAGONS — An Urban Fantasy.  
Students \$3  
Public \$6  
BLUE RHYTHM HOUNDS  
Cover Charge.

**SATURDAY MARCH 15**

America Games Day

**ABBREVIATION KEY/VENUE LIST**

Cafe Ext	Cafe Extension
SUB	Student Union Building
Cafe	Cafeteria
Maid	Maidment Theatre
Quad	Quadrangle
RG	Rudman Gardens
Shadows	Shadows — Top Floor Cafe, Student Bar
LT	Little Theatre
Rec Cen	Recreation Centre
BBQ Area	Grass area by Rec Cen
Rest	Restaurant
Cof Lge	Coffee Lounge
RM 202/204	Orientation Office, second floor SUB
LCR	Lower Common Room
TCR	Top Common Room
Wome	Womenspace
RM 140	TV Room
RM 143	Behind TV Room
RM 144	Behind TV Room
Exec L	Executive Lounge
OAO	Old Arts Quad
HSQ	Human Sciences Quad
ASQ	Architecture School Quad
MSQ	Medical School Quad
RM 237	Interim Marae — Room 237 SUB
MCC	McLaurin Chapel
LLT	Lower Lecture Theatre
OGH	Old Government House
NAQ	New Arts Quad
Sci Con	Science Concourse
Coun	Counselling Rooms
Mart Arts	Martial Arts RM in Rec. Centre
Uni Marae	University Marae.



# University Bookshops

phone 771-869  
both shops

## STUDENT OWNERSHIP

The University Book Shop (Auckland) Ltd was established in 1965 to provide books, stationery and other required equipment for university students. The company is 50% owned by the Auckland University Students Association and therefore contributes to the Association's finances each year. The U.B.S. has two shops, 19 High St (Downtown Shop) and 34 Princes St (Student Union Shop): see below for subjects held at each shop and a map of their location.

## TEXTBOOKS

We order all books supplied on text lists from university departments. If a book is unavailable for reasons varying from fluctuating enrolments, reprinting books or shipping delays, you can put your name down at the orders counter and we will notify you when the book arrives. It is advisable to purchase your textbooks as soon as possible because, if a textbook sells out it can take 3-4 months to obtain it again. Airfreighting costs have become prohibitive and fast restocking is becoming increasingly difficult.

Two important points to remember when you are making text book purchases:

- (1) Do not write your name in your textbooks until you are sure you will be making no course changes.
- (2) Keep the sales receipt or invoice you receive from the cashier.

## EXCHANGES

If you have to change your course and wish to return books and exchange them for others you may do so if:

1. The books are unmarked and unnamed.
2. You have the sales docket or invoice relating to the books.
3. You have proof of changing your course (i.e. the change of course form you will receive from the Registry).
4. You complete the exchange transaction by March 31st.

Books returned under these conditions can be exchanged for other books/stationery or for credit on account. Cash refunds are only allowable if a student is dropping all courses. Please notify a staff member at the cash desk that you are returning books and someone will be called to assist you.

## DISCOUNT — BOOKS

Students receive 10% discount on textbooks, recommended books and books related to courses taught at Auckland University. Exceptions to this are a small range of titles from NZ Government Printer (Acts only), NZ Standards Association, Professional Societies and University of Auckland (Manuals).

## NON TEXTBOOK (GENERAL BOOKS)

We stock a very wide range of general books, and are particularly proud of our fine selection of literature, womens' studies, Polynesian studies, social science paperbacks, peace studies, computer and professional books.

## SHOP HOURS

Both shops: Monday-Friday 8.30am to 5.30pm.  
The High St Shop is also open until 8pm on Friday and from 10am to 1pm on Saturday.  
The U.B.S. is open till 6.30pm every night during the first week of term: March 3-7.

## 19 HIGH ST.

Accountancy  
Architecture  
Commercial Law  
Computer Studies (general)  
[Computer Science texts at Princes St]  
Dip. BIA  
Economics  
Engineering

Law (Texts and Professional)  
[Law Texts also at Princes St.]  
Management  
Medicine — Years 2-6 and Post graduate  
and Nursing & Physiotherapy  
Town Planning  
Valuation

## 34 PRINCES ST.

Ancient History  
Anthropology  
Art History  
Biblical History  
Biochemistry  
Biology  
Botany  
Cell Biology  
Chemistry  
Chinese  
Computer Science  
Education  
English  
Environmental Studies  
French  
Geography  
Geology  
German  
Greek  
Hebrew  
History  
Indonesian  
Italian  
Japanese  
Latin  
Law (Texts only)  
Linguistics  
Maori Studies  
Mathematics

Medicine  
(Year 1 only)  
Music  
Optometry  
Philosophy  
Physics  
Physiology  
Political Studies  
Psychology  
Russian  
Scandinavian Studies  
Sociology  
Spanish  
Zoology

## STATIONERY/EQUIPMENT: CAMPUS SHOP

The Campus Shop stocks University crested pads, typing pads, exercise books, graph paper, pens, batteries and all basic stationery requirements for students. Casio calculators are also available.

For Medicine, Zoology, Biology, Chemistry — Lab Coats, Dissecting Kits and Safety glasses; Architecture and Engineering — Drawing Equipment; Geology — Rock picks and Hand Lenses.

University crested T-shirts and sweatshirts are also stocked at our Stationery Counter. At High Street only basic writing materials such as lecture pads and pens will be available.

## DISCOUNTS (STATIONERY)

Crested lecture pads are sold at a special discount price. Architecture and Engineering drawing equipment supplies and calculators are available at 10% discount.

## CHEQUES/CREDIT CARDS

Identification (1986 Auckland University Library Card preferred) is needed before goods can be purchased by cheque. Credit cards accepted: Bankcard and Visa.

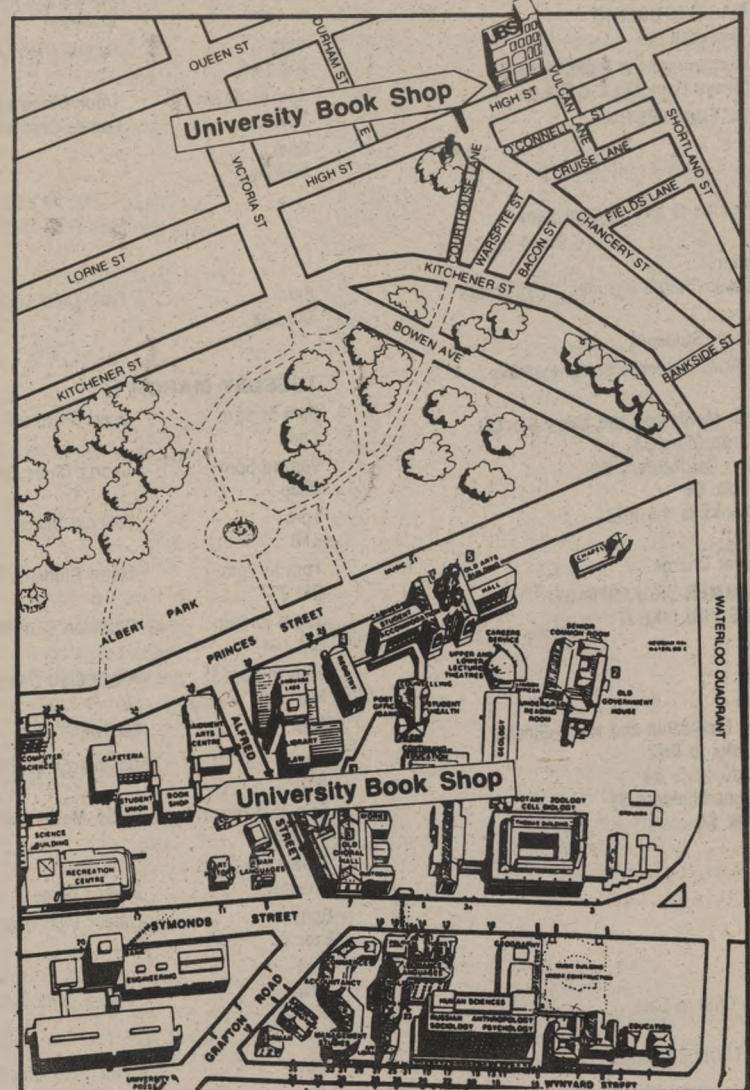
## CHARGE ACCOUNTS

Students may open accounts with suitable identification (1986 Auckland University Library card). These are monthly accounts and must be kept up to date. Students who have not had an account before should fill out new account application forms at the charge desk. New account customers must charge a minimum of \$75.00 to open their accounts and all established account customers must charge a minimum of \$10.00 on each invoice.

## SHOP LAYOUT

There will be limited bag security inside the entrance of each shop, and bags and books should be left there if possible. If the Campus bag-drop is full, please use the Library Security area or your lockers, or remove valuables from your bags if leaving them unprotected outside.

For the first three weeks of term many Stage I and II textbooks are on tables. Books on the subject shelves are shelved alphabetically according to author or editor, the exception being maps and pamphlets which are shelved at the very end of each section.





# BREAK OUT AT

## S.R.C. STUDENTS' REPRESENTATIVE COUNCIL

- ALL STUDENTS CAN SPEAK AND VOTE
- POLICY OF AUSA IS DECIDED
- ACTIONS OF THE EXECUTIVE ARE CHECKED
- YOUR MONEY IS GRANTED TO ACTION AUSA'S POLICY

**MEETINGS EVERY WEDNESDAY  
AT 1 P.M. IN THE  
CAFE EXTENSION.**

### GRADUATES DO WELL IN JOB MARKET

Auckland University graduates did especially well in gaining jobs last year, a recently published report shows, and this trend is holding up so far in 1986.

The survey by the University's Careers Advisory Service shows more 1985 graduates were employed in both the public and private sectors. And the Careers Advisor, Mr Guy Nash,, says: 'While there are some question marks over the coming months, overall demand still seems very strong'.

The survey shows a record total of 2,511 students gained degrees and diplomas from the University in 1985, compared with 2,398 in 1984. There was a 97.9% response rate to the survey, which found the proportion still seeking work at the time of their graduation in May was 7.4% - well down on 1984 (10.2%) and 1983 (11.2%).

The breakdown for the different faculties shows a rising demand in most areas, though the trend is much stronger in some.

For graduates in the faculty of Architecture and Town Planning, the report says the job market appeared 'much more buoyant', and 81.4% of graduates were employed in New Zealand compared with 74.4% in 1984. The number employed overseas also increased. The improved situation was reflected in the proportion of 7.2% 'still seeking' at their graduation compared with 16.7% a year earlier.

Rather more graduates from the Arts Faculty also found employment in 1985; the percentage still looking in May dropped from 13.8% (1984) to 12.4% (1985). The percentage studying at teachers colleges (4.3%) was the lowest on record.

The number graduating in the Engineering School was the highest on record at 226; more went overseas (13.7%, compared with 10.6% in 1984) and there was a slight drop in the number of graduates employed within New Zealand - 73.9%, down from 75.8%. The demand for engineers is very evident, the report says; the percentage of job seekers was only 3.5% & 5.3% in 1984).

For graduates in the Law Faculty the situation continued to improve, and the figure of 77.2% finding work in New Zealand was the highest since the surveys began in 1974. The percentage seeking employment continued to drop, to 11% to 1985 from 14.7% in 1984.

The number of graduates in the Faculty of Medicine dropped last year to 283 from 308 the year before. The report comments that doctors have very little difficulty in gaining employment, and the number of graduates doing so in this country has increased steadily over the last five years.

From the Science Faculty, the number of graduates reached 465, the highest on record. The percentage seeking employment almost halved, from 11.8% (1984) to 6.2% (1985). And the improved job market was reflected in the percentage of graduates finding employment within New Zealand, 41.5%, which was the highest since the surveys began. (This figure does not mean that many science graduates go overseas; it reflects several factors, including the high proportion who go on to take advanced degrees here before seeking jobs.)

Peter Russell  
Information Officer  
Auckland University  
Phone 737-698

### SRC CHAIRPERSON, KIRSTEN THOMPSON

An area of work that I'm particularly interested in for 1986 is Bursaries. N.Z.U.S.A. the National Student Body has just finished participating in a government review of the ENTIRE Bursary system it has come up with some amazingly good recommendations which include increasing bursary to \$115 a week. Axing the unfair rule that students under 20 can't get Accommodation Benefit. Increasing Bursary tenure to 6 years. Making the Hardship grant easier to get.

All these changes could be implemented in 1987 IF students mobilize to show the Government and Community how much we support the review. The next review will probably not happen for another 7 years, so it's really important we act now.

I'm going to be selling a Bursary Action group on Campus, to plan the Education Campaign for Term 1.

I believe too little has been done on Basic education issues on this campus in the last few years.

Keep your ears open for further activities on campus on Bursaries. This is an issue that affects us all.  
**SO GET INVOLVED!**

See you at S.R.C.

Kirsten

*The most interesting lunch in town  
- for just a few dollars.*

*Five Columns  
123 Albert Street.*

*Now serving light lunches  
12-2.30 pm. Monday-Friday.  
Blackboard Menu features*

*• Sushi •  
Home made breads  
Tofu specialities  
Delicious desserts  
Coffees and Teas..  
~ ph. 397 632 ~*



# CAMPUS

# VIEWS

## STUDENTS SUBSIDY INADEQUATE

Says Association President

Many tertiary students will face unemployment or even underemployment as a result of the Government's indifference over the summer students job subsidy, says Mr Graham Watson, President of the University Students' Assoc. Mr Watson told Craccum that he predicted a sharp drop in the number of students fully employed over the summer months. He said they needed every dollar earned and saved to see them through the first term, let alone the year.

Asked what the late date of making the subsidy available only after December 2 meant, he retorted with the comment that the Government was doing its very best to make things tougher instead of easier.

Welfare Officer for the Association, to late Dec., Mr Colin Patterson stated, 'Any cut in the number of jobs meant less Womin, Maori's, Pacific Islander's and also the Disabled students.'

'Students are only interested in finding summer employment; a job subsidised for an employer is irrelevant to them,' said Colin.

He has been extensively involved with both the varsity and Manukau job search centres.

After checking, Mr Patterson had found that over the summer many jobs available were in fact unsubsidized, mostly short term casual jobs - certainly not the ones suitable for tougher times and higher living costs, and in essence, again not suitable for students trying hard to accumulate large savings.

The final word came from the AUSA President. Mr Watson says the Association will continue to push for the Government to fully realize its responsibility to all tertiary students. 'They, the Government and all MP's must be made to realise they are treating students as a cheap and plentiful labour force by selling us down the river now the election is out of the way.'

Craccum will carry a further report on this important issue: \*\* If any students would like to put their experiences down in print - contact CRACCUM's office.

## STUDENT JOB SEARCH

Student Job Search is now operating from Room 102 (the Part-time Employment Bureau) on the first floor of the Student Union building. While this year's all-out campaign to attract offers of long-term summer employment is now at an end, we still have a wide range of casual and short-term vacancies on our books. And, over the next few weeks, we should begin to build up a supply of ongoing, part-time jobs to see you through the year.

So, for the bit on the side that you'll need to survive, come up and check out the jobs boards at Student Job Search.

## AUSA NOMINATIONS

Nominations are invited for the position of Sports Officer.

The term in office is until the 31 December 1986.

The Sports Officer shall supervise the affairs and safeguard the interests of all affiliated bodies formed for the purposes of sport and shall be Chairman of the Sports Council as provided in the Seventh Schedule hereto and the Tournament Committee as provided in the Ninth Schedule hereto and a member of the Blues Committee as provided in the Eighth Schedule hereto, which shall be and shall be deemed to be part of these Rules.

Nominations should be made in writing and preferably on the form available from the Association office.

Further information concerning this position is available from the Secretary, or from the President.

Pilar Alba  
SECRETARY

## Goods and Services Tax: A.U.S.A.

The amount of G.S.T. payable is dependent on the period that the services are said to span. If as appears to be the case our subscription year spans 1 April to 31 March then G.S.T. is payable at 10% on six months (1/2) of the fee and building levy.

## A.U.S.A. Functions Department

A fully qualified and professional team is ready to meet all your function requirements.

- ★ CONFERENCES
- ★ SEMINARS
- ★ 21ST BIRTHDAY PARTIES
- ★ WEDDINGS
- ★ SOCIALS
- ★ BUSINESS LUNCHESES

For bookings or further information, contact Stan Lockie (Catering Manager) 3 789, Ext 804.

## STUDENT UNION

Generally, keeping the Student Union clean, secure and standing is my job. Growling at people for making a mess, damaging property, hassling the custodial staff, losing keys, drinking without a licence etc, etc. are just a few of the delights of my day.

I'm also the person to see for a Liquor Licence and security if you're running a function. In our experience the most successful functions are the best organised. Running a function requires liaising with a number of people, so pick up a 'Running a Function?' handbook from reception to make sure you've covered everything. If you're confused come down and see me. I live in the office opposite the President and welcome enquiries or comments.

The facilities in the Student Union are currently operating at over-capacity and looking pretty tired. Despite a 23% increase in the student population since 1977, no space has been added to the Union. This year development for the Student Union will begin as a result of finally getting a rise in the building levy. Meanwhile you can help by taking some care of the place. PLEASE put your rubbish in the bins, be patient with the queuing and don't take it out on the staff - and have a great year.

Penny de Valk



The offending family: towering insult?

## ROYAL VISIT

Organising live television coverage for eight royal events is no simple matter as producer Jillian Ewart discovered when she first began the task early in December.

'Every staff member, which included over 30 outside broadcast crew, had to have security clearance,' she says. 'Everyone applying for accreditation had to supply details of their date and place of birth so that the police could make a check against Central Criminal Records.'

At one stage, the police were also

giving those details to the Security Intelligence Service for further security checks.

This is the seventh visit the Queen has made to New Zealand. We led the Commonwealth in breaking down the formality of the visits by staging the first ever 'walkabout' in 1970.

Queen Elizabeth II and the Duke of Edinburgh will be arriving in Auckland on Saturday 22 and will travel to Napier, Hastings and Wellington. The Duke will also make a trip to Motonui to open the new synthetic petrol plant there.

## TYPESETTING AND PROCESS CAMERA WORK

The Students Association is able to undertake all TYPESETTING AND PROCESS CAMERA WORK promptly and at reasonable charges. Any work from small leaflets to large books welcome. Typesetting - ring Barbara Hendry (30789 ext 827). Process Camera Work - Ring John Bates (ext 862).

## BEAT THE BURSARY BLUES (the unkindest cut!)

Have the kindest cut, perm, or colour with Cut Above cash coupons



*Cut*  
**ABOVE**

THE Cut ABOVE  
22 Lorne Street, Auckland 1.  
Phone 30-689.

DOWNTOWN Cut ABOVE  
3A Lower Albert Street, Auckland  
Phone 790-987

K'RD Cut ABOVE  
St Kevins Arcade Phone 734-232

TAKAPUNA Cut ABOVE  
Huron Street, Takapuna  
Phone 493-132

**\$10 off    \$7 off    \$20 off    \$5 off**

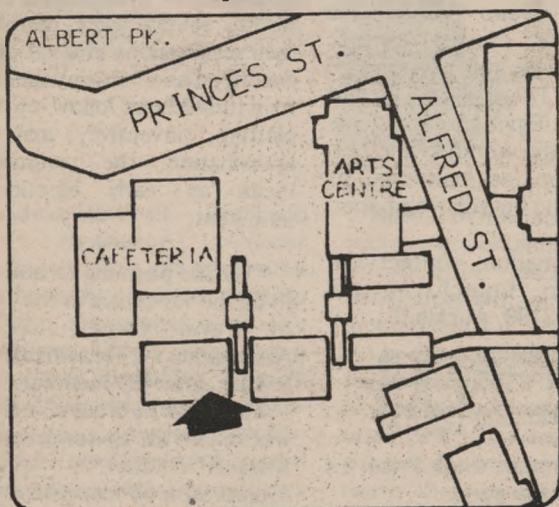
Get a cut, perm, or colour with Cut Above cash coupons

BRING THIS ADVERT TO OBTAIN DISCOUNT  
AT ALL 4 CUT ABOVE Salons. Monday to Thursday.  
but not late nights during term holidays.



## Campus Travel Centre

Auckland University  
Situating on Campus  
top floor



We are THE ONLY Travel Agency  
specialising in travel for the youth  
market and all tertiary students on  
Campus.  
FULL TRAVEL SERVICES ARE  
AVAILABLE:—

- Coach and rail bookings
- Motels, Hotels
- Ski Holidays
- Camping Holidays
- All international air fares
- Students air fares
- Application for I.S.I.C. membership
- All discounted air fares
- Overland Tours
- Camping tours of Europe
- Processing of all documentation — Passport/visas
- Travel Insurance, flexible cover at competitive rates
- Student work exchange programme

BOOK NOW FOR MAY  
HOLIDAY AIRFARES

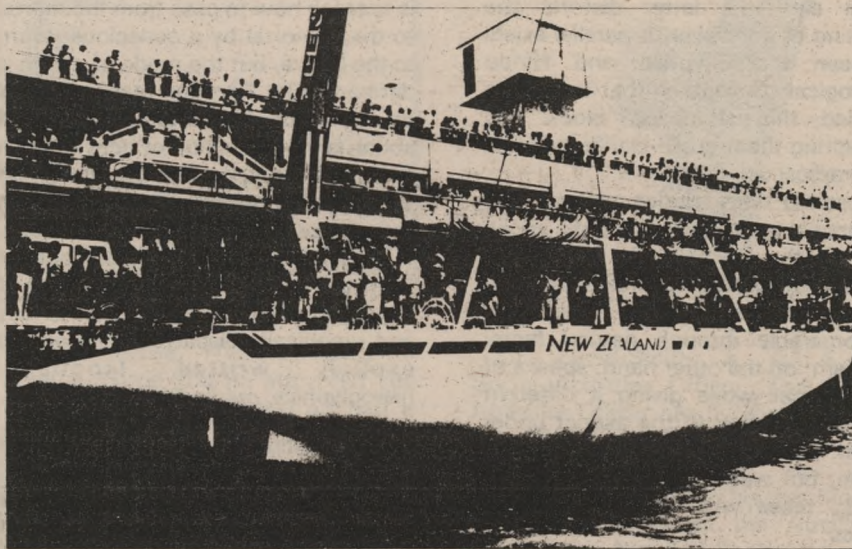
Don't be left standing at the  
Airport with a Standby ticket.  
We're taking bookings now for  
thrifty fares and other specials.

Phone 735-265 or Auckland University 737-999 ext 842.

## SSSPORTS

### The Big Challenge — AMERICA'S CUP

The Story of The Twelve-Metre Yachts KZ 3 & 5



New Zealand is launched before thousands of visitors on water and land.

Twelve-metre yachts are the speedsters of the yachting world. They're maxi racers between 64 and 70 feet in length carrying huge sail areas on masts of up to 90 feet in height.

If you've already worked out that 64 to 70 feet is closer to 20 metres than 12, you're quite right. Twelve-metre yachts are *not* 12 metres in length.

Their name is derived from a formula which takes into account several dimensions — in metres — divides them by 2.37 and has to yield a number not exceeding 12.

Or, in other words: 
$$\frac{L + 2d - F + \sqrt{S}}{2.37} = 12$$

L is the length of the hull at 180mm above the waterline.

The difference between the skin girth and the chain girth is summed to get d, which is then multiplied by two for use in the formula.

The first America's Cup defence was fought in 1853 between schooners more than 120 feet long and in challenges through to the 1940s craft between 90 and 140 feet long were used.

After World War Two, the New York Yacht Club, which held the Cup up till the last challenge in 1983, adopted the Twelve Metre International Rule for challengers and defenders and this rule, with some modification, still applies.

F is the average of three freeboards: forward, midship and aft.

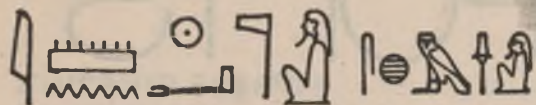
S is the square root of the raised sail area (mainsail and fore-triangle).

And for those who aren't already at sixes and sevens with twelves: to qualify in this category, the mast height is limited to 25 metres, the jib stay to 75 percent of that dimension, the minimum beam is 3.59 metres and the maximum draft 2.68 metres!!!





## EGYPTIAN CHAPLAIN'S CHAT



In every religion, there are three aspects: the fundamental (or metaphysical) knowledge of causes; it's means of transmission (images and myths); and it's moralising aim. When philosophy is subordinated to the moral aim, the latter distorts the teaching of principles. A parallel exists between the Egyptian and Hindu theological concepts in that they have avoided this stumbling block. So comparing them could clarify subjects that interest us.

Absolute unity eludes reason. The ancients in both Egypt and India spoke of it as the Unknowable; they then took its three-part manifestation as a basis of reasoning, mentally demonstrable through natural facts. Judaism, on the other hand, speaks of 'the Eternal' while giving it different names according to the aspect under which it is revealed and its mode of action, but water down their case by linking these with moral and racial taboos.

Neither Egyptian nor Hindu metaphysics, however, weaken their absolutism by the incorporation of moral precepts, which are considered to be relative consequences of the relative condition of humankind on Earth. In our teaching, what concerns the original cause and the divine world of principles must not be confused with what concerns the development of lower worlds and of humankind on Earth.

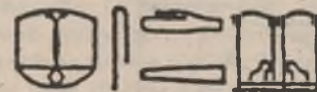
Egypt and India consider that the descent of the spirit (*Neb-er-Djer*) into matter, is an act of awareness involving all the possibilities immanent in the original cause (the 'passion' of the animating word.) The aim of both is to teach how to pass from the mortal to the immortal by a conscious return to the Cause, but the mode of action is different. The Egyptian teaching relies on the symbol in nature; its way of action is the projection of heaven upon Earth, of the metaphysical world into the physical world, and of cosmic causal functions into the human body. It is the initiation into the awareness of 'identity' through continuous identification. This cosmic view is fully and graphically displayed through the explicit written language: hieroglyphics, *medu-Neter* 𓆎𓅓𓏏𓏏𓏏.

The multiplicity of images in these ancient theologies expresses the manifestation of attributes (in principles and functions) of the unknowable beings, which through this process become relatively knowable for intellectual interpretation.

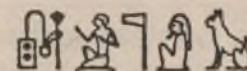
From the time of ancient Egypt until now, however, movement in the development of human knowledge has been opposite to that in theological representation. Human knowledge becomes more and more complex, whilst theological representation has become more and more simplified,

down to the puerile level of such monotheisms as Atenism, Judaism, and Islam. The original intuitive method of early times that allowed humans to participate in divine knowledge was later replaced by cerebral methods and culture that gave birth to the numerous analytical sciences. On the other hand, the elaborate theological representation of the ancients led to such precis as the simple Christian *Credo* and to the arrogant grandeur of the Koranic affirmation based on the negation of what is relative: 'There is no god but God', Allah, or in Egyptian precis, the original breath of the world, in and out contraction-dilation, as expressed by the first letter of the Egyptian alphabet the vulture, a

For more information, contact The Ancient Egyptian Church of the Infinite, P.O. Box 3189, Auckland.

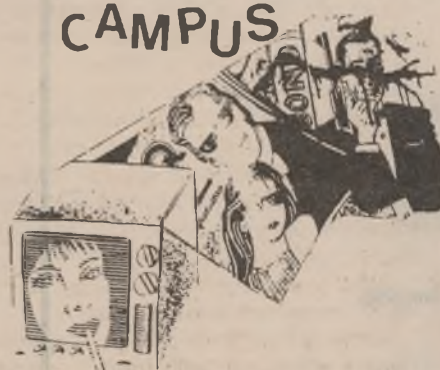


Inyotef D. Smauguar, High-Priest of Amon-Ra, king of the gods.



### craccum

YOUR STUDENT  
NEWSPAPER  
AVAILABLE  
ON  
CAMPUS



top floor  
student union

## Executive Scandals Out in the Open!

'Political  
Interference' say  
former Exec  
Members.  
Showdown  
Election Looms!

At a meeting of The A.U.S.A. Executive held on Thursday 20th February in the A.U.S.A. Council Room, several Exec members tabled their resignations in what one observer described as a "stormy meeting". As a tumultuous follow-up to weeks of plotting, invective, and character-assassination, the resignations now mean an early Election will be imminent.

"We are planning to hold an Election to fill the vacancies in the 4th week of Term One," declared the Association's Treasurer, Mr Bruce Palmer, after the meeting.

Those who have resigned and whose jobs are up for grabs, are: **Kirsten Collins** — Media Officer, Chairperson of \*campus Radio and the Craccum Administration Board. Reason: Alleged political interference in the C.A.B.

**Douglas Alo** — Sports Officer. Reason: he has taken a job in the Customs Dept.

**Sylvia Aka'olaa** — Overseas Students' Officer.

Reason: Overseas without leave. **Fraser Wood** — International Affairs Officer.

Reason: Overseas without leave... Nominations for the vacant positions will be officially opened shortly. Watch the A.U.S.A. Official Notice Board for details. Craccum will bring you a news update on the scandal next issue.



## UNIVERSITY BOOK SHOP

HI! WELCOME TO UNIVERSITY.  
BOTH BRANCHES OF THE LIBS ARE OPEN FROM  
8:30 - 5:30 EVERY DAY. AND OUR CITY BRANCH  
TO 8PM ON FRIDAYS, +  
SATURDAYS 11AM - 1PM

AND DURING THE  
FIRST WEEK OF TERM, BOTH  
SHOPS ARE OPEN FROM 8AM  
TO 6:30 PM EVERY DAY. AND  
OUR CITY BRANCH IS OPEN  
TO 8PM ON THAT FRIDAY ALSO  
SEE YOU SOON

STUDENT UNION BUILDING  
34 PRINCES ST AND 19 HIGH ST  
AUCKLAND 1  
TELEPHONE 771 869

STUDENTS YEARLY PLANNER

### DRAFTECH

AVAILABLE AT U.B.S.

FEATURING 1986 ACADEMIC DATES

Hi, I  
Stude  
(D.S.I  
by the  
stude  
way,  
some  
offere  
eral i  
rary i  
rials,  
for te  
assis  
and b  
for e  
enrol  
ing  
notes  
camp  
tance  
resou  
are re  
I att  
the p  
dents  
liase  
disabl  
for th  
Auckl  
ness  
dents  
there  
univer  
The  
Group  
disabl  
There  
month  
social  
newsl  
dents  
studen  
is a gc  
sharin  
is dur  
March  
Lounge  
dents  
regar  
and f  
serve  
If yc  
adjust  
tant th  
particu  
the un  
diabili  
which  
Once  
elimin  
on you  
My  
Stude  
office  
Phone  
introdu  
there  
sage



# ROGUES GALLERY



Hi, I am Adele Barnhill – Disabled Students' Resource Officer (D.S.R.O. for short). I am employed by the Students Association to help students who are disabled in any way, including those who have some temporary disability. Help is offered in the form of providing general information, assisting with library research, photocopying materials, organising special conditions for term tests, providing mobility assistance for wheelchair-bound and blind students, being a scribe for essays and exams, arranging enrolment and final exams, arranging special equipment, lecture notes, access improvements, on-campus parking, financial assistance and providing learning resources and support for students are required.

I attempt to encourage awareness of the particular needs of disabled students by the university community and liaise with faculty staff on behalf of the disabled students. All in all the future for the disabled student is bright at Auckland University. Gradually awareness and acceptability of disabled students on campus is increasing. In 1981 there were 20 disabled students at this university, now there are 75.

There is a Disabled Students Action Group (D.G.A.S.) on campus for both disabled students and abled-bodied. There are lunchtime meetings every month or two and there are various social outings throughout the year. A newsletter is posted to disabled students every couple of months to inform students about university life. D.G.A.S. is a good way of meeting other people, sharing ideas etc. Our first get-together is during Orientation. On Monday 3 March 5 – 7.30pm in the Coffee Lounge there will be a Disabled Students Introduction Evening. A video regarding the disabled will be shown and food and refreshments will be served. I hope to see you there!

If you are a disabled student then to adjust quickly to the campus it is important that you identify yourself and your particular needs as soon as possible. If the university remains unaware of your disability you may suffer disadvantages which could otherwise be avoided. Once major physical difficulties are eliminated you are free to concentrate on your academic and social activities.

My office is on the ground floor of the Student Union building – the second office on the left past the receptionists. Phone 390-789 Ext. 812. Call in and introduce yourself. If I am not there you may want to leave a message at reception.



Hello, I'm Rick. Sorry that that's not such an original or imaginative introduction but at least it's straightforward. And not much else around here is.

I'm the Education Vice-President of the association. This seems to involve looking after your educational interests with the University, and maybe achieving some restructuring of the nearly all-powerful system. Someday it may serve the needs of students.

For those of you who don't know this is my first year in this job so I've spent months researching and trying to get some overall historical perspective.

It's too early so far to say if it's been of any value but I did find this in a research paper that I think, dates from 1971.

'Looking at the present system in operation we see frustrated teachers and frustrated learners, stultification of creativity, gross inefficiency, wastage of talent, and, all in all, a potentially creative and liberating system so bound by the conventions and restraints of the dominant socio-economic order as to be unrelated and irrelevant to the real needs of the people of our society.'

If you personally want to help, there are many ways which we have access to the University's bureaucracy. The first is the Class Rep. system. These reps are selected by each lecture and between us we should be able to address any problems that arise in any individual departments between staff/coursework and students.

As well I hope to form a *Student Senate* which will help formulate and co-ordinate the direction of A.U.S.A.'s education policies. If you feel you can offer anything to Student Senate then fill out the relevant section of your enrolment form and I'll contact you.

Good luck with your studies, have fun.



Hi! Welcome, Welcome back to Varsity. Hope you all survived the hassles of enrolment and all had a groovy holiday!

This column is my chance as an Exec member to have a burble in Craccum.

To start off, (plug! plug!) I'd like to invite everyone, especially first year students to the First SRC of the year on Wednesday March 5 in the Quad.

Varsity can be an intimidating and lonely place especially if you're new here. Thousands of students everywhere, but no-one you feel you can chat to or have a cup of coffee with. Maybe lots of your friends aren't at Varsity, maybe you don't know a single friendly face in your whole lecture.

A way to make the most of your time at Varsity IS NOT by just burying your nose in your books and studying 24 hours a day. There's heaps of things you can get involved in, - probably the widest range of activities any of us have ever come across before. Join a club, get into the fitness programmes at the Rec Centre, zap along to some of the dances Orientations got on, watch out for the plays and films on at the Maidment, and read Craccum to see what else is going on. We're not just here at Varsity to get a degree, but to get involved, learn from and experience the huge range of social, cultural and political activities that go on at Varsity.



Liz Lovell-Smith is A.U.S.A.'s Social Activities Officer. The Social Activities Officer has five basic duties, according to the A.U.S.A.

One, Administration, but I'm basically an organiser. This year I made press releases to all the Auckland newspapers like the Central Leader, N.Z. Times, the Harbour News, to name some, informing them of our upcoming orientation programme.

Two, I helped organise the timber and paint for the maze! Even more startling, if some students remember was the beaut bucking bronco last year during cerebral rinse.

In fact, Liz can get hold of anything and her files are full of wierd and strange contacts, she says.

The most important job I have is being responsible for the bands that play at Shadows, and I would like to give young bands a chance.

Bands that are not just necessarily young in age although Liz says many students play in bands. Seeing that the New Zealand music industry is 90% white N.Z. men! Is it too much to ask that we have *ethnic* music and women's groups? Especially to play a little more at Shadows. After all women's night is now only on the first Monday of every month - that's a mere six nights a year!

Liz says her job is the only one like it in N.Z., although the job of social activities officer is common overseas. Liz graduated from Victoria, and while not a student here, Liz will tell you that her door is always open to students, and that she is pleased to help any students wanting to organize any social activity.



"Thank you for smoking."



"Trouble is, once he gets going they can't stop him."



# NGA WAHINE

NGA WAHINE

Welcome to the first Nga Wahine column for 1986. Nga Wahine is simply news about women from campus, the local community, and the world at large. Read on for more.

## ◀ WOMENS LIBERATION?

On Sept 18, 1985 in Kathmandu, Nepal, 16 year old Laxmi Shrestha was doused in kerosene by her father-in-law and set alight after he failed in his attempt to rape her. The fire was put out by passers-by who rushed her to hospital, but Laxmi Shrestha died a week later. She had been abused and tortured by both her husband and father-in-law during her 3 month marriage.

Many Nepalese people are revolting against this extreme case of violation of women in Nepalese society and demanding justice. However, the Government has been defending Laxmi Shrestha's husband and father-in-law who were released on bail shortly after the incident.

## (ASIAN STUDENTS ASSOCIATION)

More info about this tragedy and letters of appeal you can write to the Nepalese Govt are available in Womenspace. If you want to write your own letter the address is: Lokendra Bahadur Chand Prime Minister Cabinet Secretariat Singh Durbar Kathmandu NEPAL

Also send a copy to NZUSA, P.O. Box 9047, Courtenay Pl, WELLINGTON.

womanline



PHONE 765-173

a women's  
telephone service  
for — listening  
— information  
— referral

9am — 9pm  
Monday — Friday



## ◀ SEXUAL HARASSMENT CONFERENCE

From Fri 21 March to Sun 23 inclusive. The conference will be held at Wellington Polytech. The conference will focus basically around Sexual Harassment in Education with people from Primary, Secondary and Tertiary Education, and workshops ranging from 'Sexual Harassment & Racism' to 'How to deal with Sexual Harassment'. There will be a men's conference run concurrently with the women's one. Watch this space for updates and more details, or see Lisa in the Womens Resource Room.

## ◀ SHADOWS, WOMEN & DOLPHINS

On March 10, a Monday, there will be a Women's Night at Shadows as an Orientation event. The Dolphins, and I mean the two legged kind, will be the entertainment for the evening, along with Mahina Tocker, and from south of the motu, Putty in Her Hands. So grab a friend and support Shadows by having some fun. Start the year off with a splash.

## ◀ QUEER PICTURES

From Mon 3 to Tues 11 March, this exhibition of artwork will be hanging in the Counselling Rooms. Included in the exhibition is the work of two lesbian artists. This is the beginning of a National tour, so it's your only chance to catch it. Don't miss it. The opening is at 6pm on Mon 3. All welcome.

## Women in Education: Notice

If you are interested in joining us, and have ideas for this year come along to Seminar Room E, Education Dept., 1 Wynyard St at 1.00pm every 1st, and 3rd Thursday of the month. OR Phone Cheryl Hamilton 765-173.

WOMANLINE

Womanline is a telephone listening information and referral service for women, run by an all-woman collective of volunteers.

We offer a confidential and non-judgmental service which is available for all women to phone in about any problems, queries or worries. The Womanline volunteers will listen to anything women want to talk about. For women at university these issues might include: the pressures of study, feelings of alienation, childcare hassles, sexual harassment, working out priorities, pregnancy, relationship problems, menopause, lesbianism communication difficulties with lecturers or tutors, alcohol and other drug problems, body image, etc. etc. Anything that is at all a problem to you.

Womanline volunteers are here to listen and help you clarify the issues to work things through to a solution which feels right for you.

Womanline also has a comprehensive set of files which can provide women with information they may need to know - such as legal rights, resources and services available in the community, support groups, counsellors, sympathetic doctors, or naturopaths, or womens groups and activities - to name just a fraction of the information we have on hand.

Womanline was started four years ago by a group of university feminists. Since that time our collective has changed many times, and now includes women of all ages and backgrounds, all with a commitment to helping women help themselves while at the same time working as a collective to educate and raise awareness of issues relating to women.

The Womanline Collective works as a co-operative and is non-hierarchical and we are always looking for volunteers. We provide a comprehensive training programme which covers not only listening skills and role plays, but also personal growth and self-awareness.

Womanline operates out of the Women's Centre at 63 Ponsonby Rd, but remember we are only a phone call away if you want someone to listen to you. Call us on 765-173 between 9am and 9pm weekdays.



RAPE CRISIS

Rape Crisis is one of the groups that work from the Women's Health Centre in Ponsonby.

We are a collective of about fifteen women and we have two paid full-time workers. Being a collective means that we don't have a hierarchy and everyone has input into the decisions we make and the work we do.

We provide a support and information service for women who have been raped. Women, or friends or relations of the women, ring us and we support them in the choices they make to try to get strong again. We can also provide information about services, such as medical and legal aid, that are available.

Because rape in our society will not stop unless there are major changes in our society's attitude towards women, we try to do a lot of education work. We talk to schools and community groups. It is often hard to make people understand that is an expression of force and power and is not about sex.

Most women who are raped know the rapist and 65% of rapes occur in the home. This is quite contrary to the idea many people have of rapes occurring late at night in dark alleys. It means that many women feel ashamed or guilty about what has happened to them and so they don't talk about it. Rape Crisis believes that one of the best ways of becoming strong again after being raped is by starting to talk about what happened to you.

Miriam Saphira estimates that one in four women in New Zealand, will be sexually abused before they are twenty. This means that most women will some time in their lives, will be close to someone who is raped or will be raped themselves. All women are always under the threat of rape and the constant threat of it, often puts women in a powerless position - like not being able to go out at night or being scared of being left alone.

The fact that women get raped is a symbol of womens low status in our society. Only by stopping men seeing women as objects and bodies instead of people, will rape stop. Rape Crisis works to try and change the position of women in our society.

Rape Crisis also sees a link between the low status of non-European peoples. We try to work against racism in our own groups and in our educative work.

If you would like to know more about Rape Crisis, ring us on 764-404 or come and visit at 63 Ponsonby Road.





# Only ONE Card satisfies the needs of all Tertiary Students in New Zealand

TISA CARD



first national  
student card of  
New Zealand





**HERE WE GO AGAIN!**  
Chaplain's Chat

Enrolment, Orientation, Classes, Assignments, Exams ..... It all lends credence to Elbert Hubbard's definition of life as 'just one damned thing after another.'

But is it? And are they? Certainly events follow some causally, some casually. But to accept them as futile, condemned to perdition, is to take a negative view of things.

Maybe there is hard work ahead including the tedium of memorization, long nights of swot, volumes to be read etc. But the University offers - or should offer - a lot more.

There is the world of ideas - your own and other people's to be debated with energy and enthusiasm.

There are people, staff and students

## Courses in Skill Development

### SD4 There's No Need to Hate Mathematics

Margaret Morton, PhD

9 weekly sessions - Fee \$30

Monday 6-7.30pm - 3 March-5 May

Venue: Education Dept Computer Laboratory, 34 Wynyard St.

Limited to 15 Students.

An informal look at some ways in which mathematics can be practical and/or fun. Class members will be welcome to suggest topics that they would like to discuss. If necessary small groups within the class can work with different topics. It is anticipated that part of the course will include using computers as individual aids. Only basic, primary level arithmetic type skills will be assumed.

**The Centre for Continuing Education, University of Auckland**  
Classics Building, 5 Symonds St  
or telephone 737-831.

### IC1 Statistics for the Social Sciences

5 weekly sessions

Tuesday Noon - 1.30pm or 6-7.30pm

8 April - 6 May Fee \$20.00

Room 021 Old Arts Bldg, 22 Princes St.

Statistics are just simple ideas expressed in a peculiar language. This course will explain some of the rules of this language (i.e. basic mathematical procedures) and make statistical processes easier to understand and simple to operate.

This course is suitable for students who feel their background has not adequately equipped them to cope with statistics which will crop up in their courses.

For further information and enrolment forms contact:

**Centre for Continuing Education University of Auckland**  
Classics Bldg, 5 Symonds St or  
Telephone 737-831.

to relate to in study and recreation. There are the *so cieties, clubs, events* that fill up the notice boards clamouring for your attention and requiring that you choose where you will apply your energy.

One of the definitions of the university is 'a place of putting it all together and getting an integrated perspective on life', not just gathering separate building blocks, but finding a sense of value in the relation of the parts to the whole.

What is the faith by which you live? It is faith which gives substance to our hopes and makes us certain of realities we do not see. Faith enables us to see each event, each moment as an opportunity and not merely as an intrusion into life. Even from negative experience faith can help us find positive values.

In the last resort, I support we all have faith of some kind. Some believe that the unseen realities are hostile or indifferent and that we are swept along like grains of sand or as playthings of fate.

Others, however, believe that purpose and personality are the great unseen realities and from these, they find direction for their lives and value and meaning in their living.

contributed by J.M.K. for the University Chaplaincy

### THEATRE IN OTHER CULTURES

How does theatre reflect the culture it comes from?

Do theatre traditions in the East and West have anything in common?

The fundamental nature of drama is theme and the course includes its form in different cultures. There will be lively first hand accounts of a wide range of theatre; ritual drama in Vanuatu and the Solomon Islands; Balinese theatre; Javanese shadow and puppet plays; the Kabuki and Noh theatrical traditions in Japan; Indian Kathakali; and middle European passion plays.

Slides, photographs, films, tape recordings, masks and other theatrical artifacts will bring these rich and diverse theatre traditions alive.

**COURSE LECTURER:** Windy Blaxland, BA (First Class Hons), BipEd, ATCL (London).

8 weekly sessions, 20 March - 8 May. Venue: Room 026, Old Arts Building, Princes Street. Fee: \$22.00. Class Limit: 25. Time: 10.30am - noon.

**OTHER THEATRE COURSES FOR 1986**

Where is Theatre Going?

Wendy Blaxland

What is Theatre Going? (Practical)

Wendy Blaxland

New Zealand Drama - An Illustrated Tour

Mervyn Thompson

### THEATRE

WHERE IS THEATRE GOING?

Wendy Blaxland, BA (First Class Hons), DipEd, ATCL (London)

10 weekly session, Thurs 7-8.30pm. 6 March - 8 May. Fee \$26.00 Room 124, Old Choral Hall, 7 Symonds St. Limited to 25 participants.

Is theatre an outdated art-form? What functions can it fulfil in a world of film, television and football? This course explores the thinking of revolutionary twentieth century theatre workers such as Brecht, Peter Brook and Grotowski (the tutor has worked briefly with Grotowski's company in Poland.) We will look at the writings of these and other theorists, discuss their work from the evidence of films, photographs and the tutor's first-hand experience, and visit theatre performances to see how the various theories apply to current theatrical practice.

## Student Community Services

### WOMEN IN EDUCATION

Women in Education was formed last year to provide a focus for the concerns and experience of women students at all stages within the department - in particular to break down the isolation felt by women wishing to pursue feminist issues in their course of study.

Activities of the group last year included:-

- regular meetings, and occasional shared meals.
- the presentation of a highly successful seminar to staff, and students which addressed the issue, of the need for women's studies in education.
- discussion and critical feedback of the studies in which women were involved.
- recommendations to the departmental review, which amongst other things, argued for the appointment to the permanent staff of the department, of a full-time feminist lecturer involved in, and committed to feminist research.
- work in progress on a bibliography of feminist research with a special emphasis on education, and including other related areas.
- networking with other women's groups on campus.

### AUDIO VISUAL CENTRE

The Audio Visual Centre is offering two additional services in 1986:

**Graphic Artist** - A part-time graphic artist has been retained on an experimental basis to assist with the preparation of teaching and research requirements on the main campus.

**Susan Wolfendale** will be available in the Audio Visual Centre on Mondays and Wednesdays (phone Ext. 7212). Ms Wolfendale will also be available to assist with *Open Day* display material. The service will operate on a *cost recovery* basis, with charges set at \$10 per hour plus materials.

**Audio Visual Equipment Repair and Maintenance:**

The Audio Visual Centre is also expanding its resources for repair and maintenance of the widening range of audio and video equipment in use throughout the campus.

**Mario Bertora** is now employed full-time on this work and is available for advice and consultation in the Centre. This service will also operate on a *cost-recovery* basis, with charges of \$10 per hour plus materials - rates considerably below those available commercially. The equipment repair service is also contacted on Ext. 7217.

Messages for both the Graphic Artist and Equipment Repair service may be left with the Audio Visual Centre secretary, Vicki Forsyth on Ext. 8918.

**Yours to treasure - this sumptuous souvenir tribute to the Kremlin's new glamorous, likeable, fascinating superstar...**



## A Life In The Day Of Comrade Gorbachev

(as told to A. N. Otkerenko)

Generally the day starts at cock's crow when my disident, Natasha, comes in for heart massage and aerobics before a 100-kilometre jog with my Afghans and string of racehorses around Gorki Park. For this I wear always my Leningradidas shorts and Nuke trainers.

Then is taken a hearty breakfast of three Shredded Wheat, bacon, sausage, eggs sunny side up,

grilled tomato and fried slice, with lashings of strong hot vodka. After the post - I try always to answer personally at least a thousand of my fan letters each day - I will skim through the world papers and latest poetry, then play squash for one hour against the Red Army, afterwards relaxing at my harpsichord or playing chess with my personal computer until

Sergei brings the Ferrari round for the short drive to the Kremlin. On my cellular phone I now generally call my major domo to discuss luncheon, then perhaps Mrs Thatcher to do business, or maybe fix up a few chukkers of polo for the afternoon if I am not to be at choir practice or writing more of my seminal, yet wittily irreverent novel (continued on page 58)

**NEW from The House of Gorbachev!**

### MY MIKHAIL - by his loving Mum

**Glorious moments captured for all time on a video you'll want to cherish**

The heady weeks of Soviet perestroika

First steps up the party apparition

The Politburo at last!

He wins his first Order of Lenin

Will The Old Fool ever retire?

The moment to make my personal move!

To: Novosti Novelties and Business Mart, c/o 10 Downing Street, London SW1

[ ] YES! Please rush me my own personal copy of

MY MIKHAIL - by his loving Mum.

**SPECIAL OFFER! Order TWO Boy Gorbachev T-shirts and get a fashionable Gorbachev car-sticker absolutely FREE!**



## STUDENT SERVICES



### AUCKLAND UNIVERSITY SECONDHAND BOOKSTALL

With the price of books going through the roof it makes sense to get as many of the essential ones secondhand as you can. The Secondhand Bookstall also provides the best opportunity for you to sell the books you no longer need.

**WHERE:** Bookstall operates in the Functions Room; top floor of the cafeteria.

**WHEN:** Books are received for selling: 9am Monday 24 February (1986) until 6pm Tuesday March 4th.

Books are for sale: 10am Tuesday 25 February until 6pm Friday March 7th. **PAYOUT:** Cheques for books sold plus unsold books to be collected 9am - 6pm Thursday & Friday 13-14 March (1986).

**HOW:** To sell books: bring your books to the Eastern (Symonds St side) end of the Functions Room. You must price your own books. We suggest at least 10% down from the price you paid. Remember that on new books you got a 10% discount off the stated price. Current texts sell easily. Non-texts need to be priced much lower if they are to sell - other students are short of cash too.

To buy books: come to the Western (Princes St side) end of the Functions Room. Be prepared to wait as lots of others are doing the same thing. Be careful about texts that have several editions; and earlier edition may be useful or useless. Seek informed advice.

To collect money and unsold books: come to the Western entrance of the Functions Room. If you can't come and want your unsold books back, authorise a friend, in writing, to collect them for you. Uncollected cheques are posted out.

For further details refer to the Secondhand Bookstall entry in the Orientation Handbook.

### LIMBS, MELTING MOMENTS

Maidment Theatre - Students \$8.50, Public \$14.50. Tuesday February 25th to Sunday March 2nd 8pm.

A series of works by various choreographers including Mark Baldwin, Mary-Jane O'Reilly, and Jan Preston. The live music from the string section of the Auckland Philharmonia Orchestra adds vitality to an already exciting show.

## SROW

What does SROW do?

SROW conducts research in areas of concern to women. The research is of benefit to women and organisations whose work concerns women.

Projects can be undertaken nationally - "Urban Women", "Employers Attitudes" and "Women and Money" - or at branch level where projects have covered such topics as: Maternity services, solo mothers, childcare, housing, care of dependents, and community studies.

SROW also makes submissions to Parliamentary Select Committees and Commissions of Inquiry.



### WOMEN'S LIBRARY

The Women's Library at the Women's Centre is available for book-lending in 1986. We have books and magazines covering many issues relating to women, both fiction, and non-fiction. Subscription for the year is \$2. Come in and join us!!

Our Collective needs women volunteers also, and if any women are interested in using their spare time in a productive way, then any offers of help would be greatly appreciated.

So come into the Women's Centre at 63 Ponsonby Rd and see us if you are interested in supporting us either through a subscription, or offering volunteer energy.

## Weekend Workshops

**Outreach, Phone 763-221**  
(All weekend workshops are \$20 unless stated otherwise)

**March 1, 10am-4pm**

**Kete Weaving** - A course for students who have completed introductory courses or who have some knowledge of flax weaving.

**Silkscreen Print** - This course concentrates on quick and effective poster design and printing. Using posters as a focus the basics of silkscreen printing are covered in this one-day course.

**March 8**

**Papermaking** (See February 15).

**March 15, 10am-4pm**

**Raku Construction** - A workshop in handbuilt pottery using Raku clay mixture.

**Flaxweaving** see March 1

**March 22, 10am-4pm**

**Raku Firing** - Firing of the pottery made in the previous weekend using the quick firing raku method.

**Life Drawing** (see February 22)

**April 12**

**Silkscreen Printing** - (see March 1) with emphasis on fabric printing.

### 172 Old & New

172 Symonds St, Ph 733-283

'CRACCUM' is a source of free expression and information for the Auckland University Students, and the University Community.

'CRACCUM' is not the official publication of the Auckland University Students Association, Inc., or the University of Auckland. Both bodies do not endorse any opinions and/or statements made by staff and students within 'Craccum'.

'CRACCUM' - The initials make up the words - Auckland University Mens Community Common Room. It's no longer in existence.

This issue marks the 60th anniversary of publication.

Address: Second Floor, Room 213, Students Association Building, Princes Street, AUCKLAND.  
Postal: 'CRACCUM' A.U.S.A. Inc., Private Bag, AUCKLAND.

'CRACCUM' is published by the Auckland University Students Association Inc., Princes Street, AUCKLAND.

Printed by Auckland Community Print, Ryan Place, Wiri.

'CRACCUM' Phone No: Editorial 390-789 ext 841

### ACCOMMODATION WANTED/OFFERED

At this time of the year, all accommodation is at a hefty premium, and this guide may help you find the solution. First, try the UNIVERSITY STUDENT ACCOMMODATION SERVICE, at Room 222, Old Arts Building in Princes Street. Recommended that you call personally and see what is offering there first. Follow the red signs on the right hand side by the Clock Tower building. Otherwise there is a special students' accommodation notice board by the main ground floor cafeteria. Other avenues are the Housing Advice Bureau, in Rutland Street by the Central Library. They have a free listing service for both flats and houses. Phone number is 395-524 for a 24hr listing ringing in service! Otherwise dial 395-526 or call 8.00am to 4.30pm. They even have a window computer print out! Failing that the Student Association has several hostels including Grafton hall, phone 733-994; International House, phone 797-162 or Ororke hall, phone 798-235.

As a student community service, CRACCUM will place one advert per student for either accommodation available - or offered. Leave your legible notice no more than ten words in the box provided by the clubs and societies pigeon-holes in the Studdass, bldg. No charge at all! The deadline is Tuesdays at 2pm for the next issue. Otherwise details may be posted to CRACCUM, A.U.S.A., Private Bag, Auckland, 1000.

## ASTROLOGER

EXPERT, IN-DEPTH, BIRTH-CHART INTERPRETATIONS

LEARN ABOUT POTENTIAL PROBLEMS AND OPPORTUNITIES YOU'LL BE DEALING WITH IN THE COMING YEAR

VALUABLE AND USEFUL INFORMATION THAT WILL IMPROVE YOUR LIFE DRAMATICALLY.

For details contact: Dennis Frank, Astrological Consultant  
P.O. Box 46 228, Auckland 2. Phone (09) 547-358.

Genuine enquiries only

### LOCKERS FOR HIRE

See custodians NOW  
\$12.00 for 12 months  
\$7.00 refund. When key returned at end of last term 86.

# ORIENTATION 1986

## FIRST STEPS

## FRIDAY 21 FEB - MONDAY 3 MARCH

## SPONSORED BY



**The National Bank**  
of New Zealand Limited

Better People, Better Service.  
Cable-Price TOYOTA

WAIHEKE SHIPPING  
CO. LTD.

Diners Club  
International





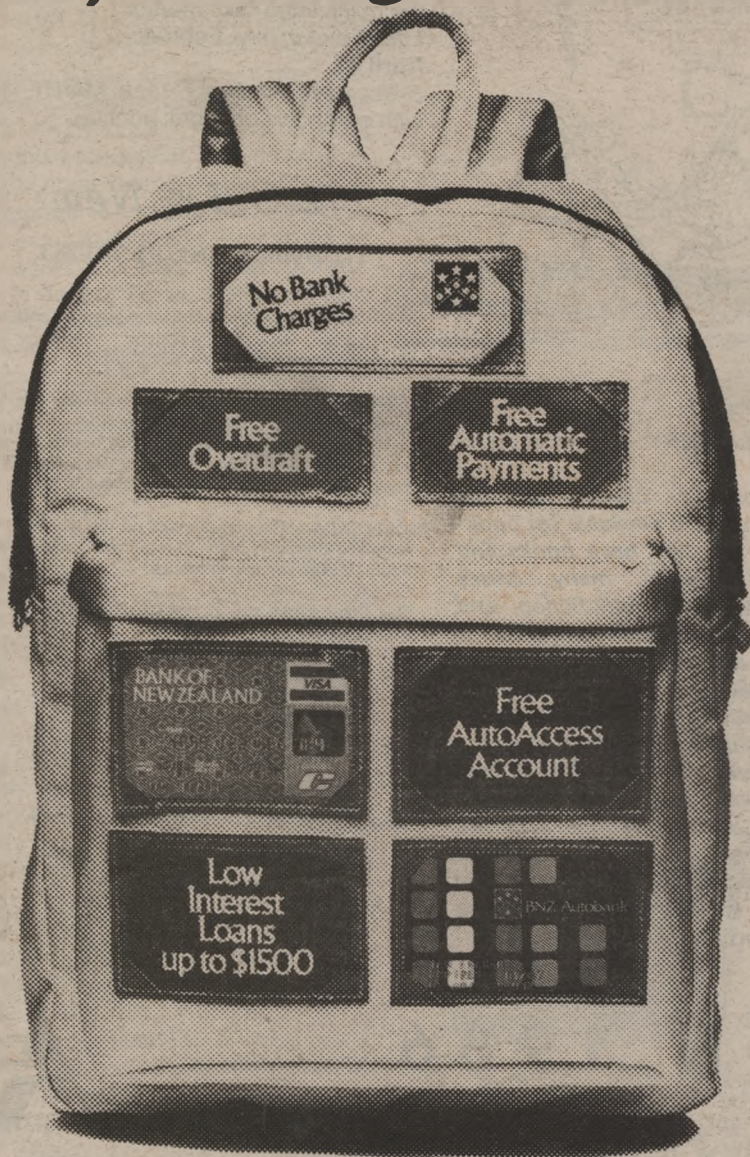
# BNZ CAMPUS PACK

Free and easy banking services for students

Bank of New Zealand has introduced BNZ Campus Pack — a comprehensive package of banking services designed to make students' money management easier and take the pressure off your finances.

**Here's what you get:**

- Interest free overdraft — up to \$300
- Free Cheque Account — no bank charges
- Free AutoAccess Account
- Free Autobank Card
- 10%p.a. Passbook Savings Account



- BNZ VISA Account with \$300 credit limit — no service charges
- Free automatic payments — your regular payments made from your account — without charge.

**You may also qualify for:**

- Low interest loans up to \$1,500 — short or long term

There's a BNZ Branch on or near every campus where you can pick up a BNZ Campus Pack brochure for complete information.

**Check out BNZ Campus Pack now  
for free and easy money management**

Deposits are unsecured. An Authorised Trustee Investment.

**Bank of New Zealand**  
On Campus with BNZ Campus Pack